

1

# ANGLO AMERICAN PLATINUM, RUSTENBURG PLATINUM MINES –DER BROCHEN PROJECT

**DMR Pre-Application Meeting**  
DMR Polokwane Offices  
**10 December 2018**



## Agenda

2

- Welcome and introduction
- Purpose of the meeting
- Project background
  - Existing authorised activities/infrastructure
- Amendment Project – Project description
- Integrated Environmental Authorisation requirements
  - Potential listed activities (ITO NEMA, NEM:WA & NWA)
  - Proposed Specialist Investigations
  - Planned Public Participation Process
- Project Schedule
- Way forward
- Discussions

## Welcome and Introduction

3



Project Proponent

Rustenburg Platinum Mines Limited



Project Applicant

Der Brochen Mine



Project

Independent Environmental  
Assessment Practitioner  
(EAP)Other Key Stakeholders

- Government Authorities and State owned entities;
- District and Local Municipalities;
- Community Organisations; and
- Interested & Affected Parties (Stakeholders).



Der Brochen Amendment Project

SRK Consulting (SA) (Pty) Ltd.

## Purpose of the Pre-Application Meeting

4

- Introduce the Der Brochen Mine's Amendment Project to the DMR
- Discuss:
  - The authorisation requirements of the project and level of assessment
  - The proposed specialist studies to be undertaken
  - The public participation process to be followed
- Confirm the way forward in terms of the Integrated Environmental Authorisation with the DMR



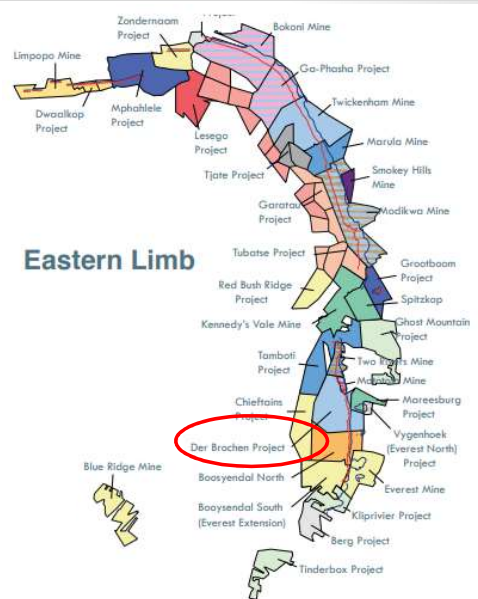
Der Brochen Amendment Project

SRK Consulting (SA) (Pty) Ltd.

## Background

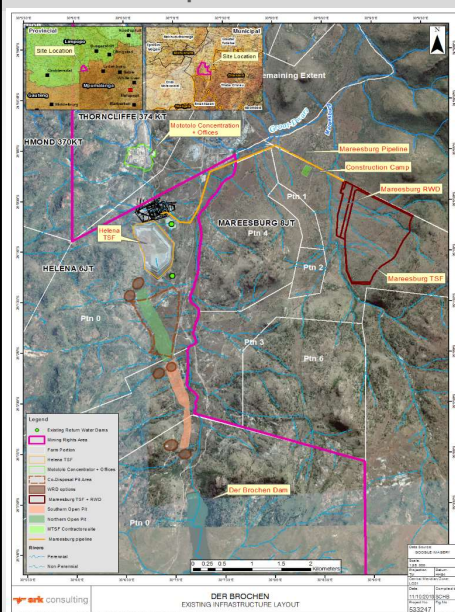
5

- The Der Brochen Mine is a platinum project owned by RPM, a wholly owned subsidiary of Anglo American Platinum (AAP), and operates under a Consolidated EMPr as approved by the DMR in September 2016, and a updated WUL approved by DWS in May 2017.
- Der Brochen is located approximately 25 km south-west of the town of Steelpoort and 40 km west of Mashishing (Lydenburg), in the Limpopo Province.
- The Mine falls within the Fetakgomo Tubatse Local Municipality, under jurisdiction of the Greater Sekhukhune District Municipality.
- The Der Brochen Mine's mining right falls on farms:
  - Richmond 370 KT;
  - St George 2 JT;
  - Hermansdal 3 JT;
  - Hebron 5 JT;
  - Helena 6 JT; and
  - Der Brochen 7 JT.
- RPM also holds the surface right to Portion 7 of the farm Mareesburg 8 JT on which the Mareesburg TSF, associated RWDs and pipeline system are located, which forms part of the Der Brochen Mine.



## Current operations/authorised activities

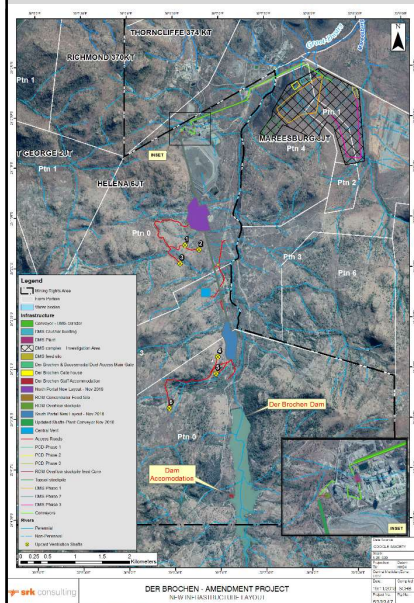
6



- The following existing activities and infrastructure are associated with the Der Brochen Mine Project, as authorised through the Consolidated EMPr and Updated WUL:
  - The Mototolo Concentrator;
  - The Helena TSF with two associated Return Water Dams (RWDs);
  - Mine offices (old farm house) and access roads;
  - Prospecting activities comprising of site preparation, drilling of prospecting boreholes, site rehabilitation and monitoring;
  - Trial mining area on the Richmond farm (activity is completed, and the soil stockpile and waste rock dump are well vegetated);
  - Abstraction of groundwater in support of mining from the Helena and Richmond licenced wellfields; and
  - Abstraction from Der Brochen Dam based on an existing lawful industrial allocation.
- Activities previously authorised, but which have not yet commenced:
  - The Helena and Richmond wellfields (only two of the authorised boreholes per wellfield currently in use);
  - Helena and Richmond shafts and associated waste rock dumps;
  - Two Open Pits (Northern and Southern Pits) and associated waste rock/overburden dumps and pollution control dam;
  - Re-routing of a 132 kV powerline; and
  - A Co-Disposal Facility (tailings disposal with a rock embankment in the north pit).

## Integrated Environmental Authorisation Requirements – Der Brochen Amendment

7



The Amendment of the Der Brochen Mine's approved EMPr and associated Environmental Authorisation (EA) and updating Water Use License (WUL) will include the following:

- The construction of a buttress wall at the existing Helena TSF under emergency circumstances as well as the development of an additional filter press plant at the existing Mototolo Concentrator Plant;
- The Der Brochen Mine's updated topsoil management procedures;
- Additional mining related infrastructure as part of the mine's development strategy:
  - Two new decline shafts (for bord-and-pillar mining method). Proposed North decline shaft within the previously approved North open pit footprint, and the South decline shaft in close proximity to the previously approved South open pit area.
  - Six up-cast ventilation shafts will be required (three per proposed shafts);
  - A central ventilation area consisting of a up-cast ventilation system that will service both decline shafts;
  - A Dense Medium Separation (DMS) Plant to be located next to the existing Mototolo Concentrator Plant;
  - A DMS Stockpile area and associated pollution control dam (PCD);
  - Additional Run of Mine (RoM) stockpiles and silos;
  - An additional Chrome Plant to be located near the existing Mototolo Concentrator Plant;
  - Change houses and office complex at the new North and South Shaft areas, respectively;
  - An explosive destruction bay area that will be located in close proximity of the South decline shaft area which will service both decline shafts;
  - Linear infrastructure: Conveyor systems & access / haul roads; and
  - Staff accommodation facilities at the Der Brochen Dam.

## Integrated Environmental Authorisation Requirements – Der Brochen Amendment

8

### Helena TSF buttress wall and operation of the filter press plant

For the construction of the Helena TSF buttress wall (under emergency situation as approved by the DMR) and operation of the filter press plant:

- Section 30(A) of NEMA - Emergency situations
  - The DMR confirmed in a letter dated 3 October 2017 that the risk of potential failure of the Helena TSF due to seepage detected is seen as an emergency situation and indicated that RPM must comply with the requirements of Section 30(A)(2)(b) of NEMA, as amended, in respect of the listed or specified activities that will be commenced with in response to the emergency situation.
- GN704 dated 4 June 1999 – Regulations on the use of water for mining and related activities aimed at the protection of water resources
  - Exemption will be required from Regulation 5 - The use of waste rock material for the purpose of constructing the buttress wall.

### Updated topsoil management plan

- For updating the topsoil management plan:
- Regulation 35 of the Environmental Impact Assessment (EIA) Regulations of 2014, as amended
  - RPM intends to update the Der Brochen Mine's existing EMPr in accordance with Regulation 35 of NEMA's EIA Regulations of 2014, as amended, to reflect the current and updated topsoil management procedures based on the results of the 2016 external audit conducted on the Der Brochen EMPr.

## Environmental Authorisation Requirements

9

### Identified legal requirements for the proposed Der Brochen Amendment Project

#### The following legislation requirements are applicable in respect of the proposed project:

- The National Environmental Management Act (Act No. 107 of 1998) (NEMA);
  - For any project related Listed Activities stipulated in the NEMA Environmental Impact Assessment (EIA) Regulations of 2014, as amended in 2017;
- The National Environmental Management: Waste Act (Act No. 59 of 2008) (NEM:WA);
  - For any project related waste management activities stipulated in GN R 921, promulgated under NEM:WA;
- The Mineral and Petroleum Resources Development Act (Act No. 28 of 2002) (MPRDA)
  - For any amendments the proposed project will have on the Mining Work Programme and the Environmental Management Programme (EMPr) in accordance with Section 102 of the MPRDA;
- The National Water Act (Act No. 36 of 1998) (NWA);
  - For any project related water uses stipulated under Section 21 of NWA.

#### Potential additional legislation that may be applicable to the amendment project

- National Environmental Management: Air Quality Act (Act No.39 of 2004) (NEM:AQA)
  - For any project related listed activities stipulated in NEM:AQA Regulations
- National Environmental Management: Biodiversity Act (Act No. 10 of 2004) (NEM:BA)
  - For any project related listed activities stipulated in NEM:BA Regulations

## Potential Listed Activities Identified (NEMA) Basic Assessment

10

GN Notice	Activity and summarised description	
GNR 983 Listing Notice 1 (Basic Assessment)	10	The development and related operation of infrastructure exceeding 1,000 m in length for the bulk transportation of sewage, effluent, process water, waste water, return water, industrial discharge or slimes.
	11	The development of facilities or infrastructure for the transmission and distribution of electricity.
	12	The development of infrastructure exceeding 100 m <sup>2</sup> in a watercourse or within 32 metres of a watercourse, measured from the edge of a watercourse.
	14	The development of facilities or infrastructure for the storage, or for the storage and handling, of a dangerous good, with a combined capacity of 80 m <sup>3</sup> but not exceeding 500 m <sup>3</sup> .
	19	The infilling or depositing of any material of more than 10 m <sup>3</sup> into, or the dredging, excavation, removal or moving of soil, sand, shells, shell grit, pebbles or rock of more than 10 m <sup>3</sup> from a watercourse.
	24	The development of a road with a reserve wider than 13.5 m, or where no reserve exists where the road is wider than 8 m.
	30	Any process or activity identified in terms of section 53(1) of the National Environmental Management: Biodiversity Act, 2004 (Act No. 10 of 2004).
	56	The widening of a road by more than 6 metres, or the lengthening of a road by more than 1 kilometre.
	2	The development of reservoirs excluding dams, with a capacity of more than 250m <sup>3</sup>
GNR 985 Listing Notice 3 (Basic Assessment)	4	The development of a road wider than 4 meters with a reserve of less than 13.5m
	5	The development of resorts, lodges, hotels, tourism or hospitality facilities that sleep less than 15 people.
	8	The development and related operation of above ground cableways and funiculars
	10	The development and related operation of facilities or infrastructure for the storage, or storage and handling of a dangerous good, where such storage occurs in containers with a combined capacity of 30m <sup>3</sup> but not exceeding 80m <sup>3</sup>
	12	The clearance of an area of more than 300m <sup>2</sup> or more of indigenous vegetation except where such clearance of indigenous vegetation is required for maintenance purposes undertaken in accordance with a maintenance management plan

## Potential Listed Activities Identified (NEMA) - Scoping and Impact Assessment

11

GN Notice	Activity and summarised description
GNR 984 Listing Notice 2	6 The development of facilities or infrastructure for any process or activity which requires a permit or licence or an amended permit or licence in terms of national or provincial legislation governing the generation or release of emissions, pollution or effluent, excluding- (i) activities which are identified and included in Listing Notice 1 of 2014; (ii) activities which are included in the list of waste management activities published in terms of section 19 of the National Environmental Management: Waste Act, 2008 (Act No. 59 of 2008) in which case the National Environmental Management: Waste Act, 2008 applies; (iii) the development of facilities or infrastructure for the treatment of effluent, polluted water, wastewater or sewage where such facilities have a daily throughput capacity of 2 000 cubic metres or less; or (iv) where the development is directly related to aquaculture facilities or infrastructure where the wastewater discharge capacity will not exceed 50 cubic metres per day.
	11 The development of facilities or infrastructure for the transfer of 50 000 cubic metres or more water per day, from and to or between any combination of the following- (i) water catchments; (ii) water treatment works; or (iii) impoundments; excluding treatment works where water is to be treated for drinking purposes.
	15 The clearance of an area of 20 hectares or more of indigenous vegetation, excluding where such clearance of indigenous vegetation is required for- (i) the undertaking of a linear activity; or (ii) maintenance purposes undertaken in accordance with a maintenance management plan
	19 The removal and disposal of minerals contemplated in terms of section 20 of the Mineral and Petroleum Resources Development Act, 2002 (Act No. 28 of 2002), including- (a) associated infrastructure, structures and earthworks, directly related to prospecting of a mineral resource; or (b) the primary processing of a mineral resource including winning, extraction, classifying, concentrating, crushing, screening or washing; but excluding the secondary processing of a mineral resource, including the smelting, beneficiation, reduction, refining, calcining or gasification of the mineral resource in which case activity 6 in this Notice applies.

## Potential Listed Activities Identified

12

### NEM:WA

GN Notice	Activity and summarised description
GNR 981 (Category B)	10 The construction of a facility for a waste management activity listed un Category B of this Schedule (not in isolation to associated waste management activity)
	11 The establishment or reclamation of a residue stockpile or residue deposit resulting from activities which require a mining right, exploration right or production right in terms of the Mineral and Petroleum Resources Development Act, 2002 (Act No. 28 of 2002).
GNR 921 (Category C)	1 The storage of general waste at a facility that has the capacity to store in excess of 100m <sup>3</sup> of general waste at any one time, excluding the storage of waste in lagoons or temporary storage of such waste
	2 The storage of hazardous waste at a facility that has the capacity to store in excess of 80m <sup>3</sup> of hazardous waste at any one time, excluding the storage of hazardous waste in lagoons or temporary storage of such waste

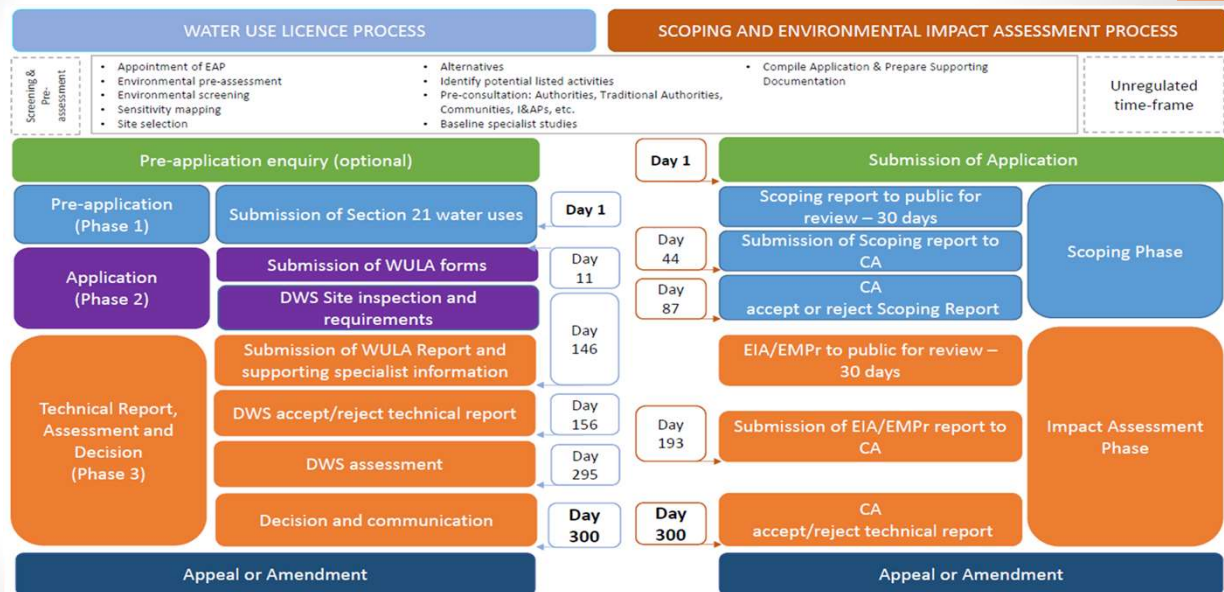
### NWA

Section	Activity and summarised description
Section 21	(a) Taking of water from a water resource;
	(b) Storage of water;
	(c) Impeding or diverting the flow of water in a watercourse;
	(g) Disposing of waste or water containing waste in a manner which may detrimentally impact on a water resource;
	(i) Altering the bed, banks, course or characteristics of a watercourse; and
	(j) Removing, discharging or disposing of water found underground if it is necessary for the efficient continuation of an activity or for the safety of people;



## Integrated Environmental Authorisation Process

13



## Proposed Specialist Studies

14

- Air Quality;
- Biodiversity (Aquatic and Terrestrial Ecology);
- Groundwater;
- Heritage and Archaeology;
- Noise and Vibration;
- Soils, Land Use and Land Capability;
- Surface Water;
- Traffic;
- Visual;
- Rehabilitation and Closure.

## Proposed Public Participation Process

15

### Competent Authorities :

- Provincial Government: Department of Mineral Resources (DMR) Limpopo Regional Office for NEMA process; and
- Regional Department: Department of Water and Sanitation (DWS) for WUL application.

### Other stakeholders:

- Land owners and neighbouring mines;
- Interested and affected parties;
- Government Departments:
  - Department of Rural Development and Land Reform (DRDLR);
  - Department of Agriculture Forestry and Fisheries (DAFF);
  - Cooperative Governance, Human Settlement and Traditional Affairs (COGHSTA);
  - Limpopo Department of Economic Development, Environment and Tourism (LDEDET);
  - South African Heritage Resource Agency (SAHRA);
  - Fetakgomo Tubatse Local Municipality; and
  - Greater Sekhukhune District Municipality

### Pre-Application Notification and Meetings

- DMR Pre-Application Meeting: 10 December 2019;
- DWS Pre-Consultation Meeting: 15 January 2019;
- Identification of stakeholders;
- Introductory meeting with key stakeholders; and
- Project announcement and I&AP registration.

### Scoping Phase Stakeholder Notification

- Site Notices;
- Background Information Documents
- Letter Notification;
- Advertisement;
- Scoping Report for public review
- Stakeholder/focus group meetings

### EIA/EMPr Phase Stakeholder Notification

- Advertisements;
- Letter Notification;
- EIA & EMPr reports for public review
- Stakeholder/focus group meeting.

## High Level Project Schedule

16

### Pre-Application Phase

- Pre-Application Meetings (DMR and DWS)
- Project Announcement
- Commence with specialist baseline studies

### Environmental Authorisation process (Scoping & EIA – NEMA & NEM:WA)

- Project announcement to public → **January 2019**
- Submission of NEMA and NEM:WA integrated application to DMR → **early January 2019**
- Scoping Phase
  - Submission of Scoping Report for Public Review → **January - February 2019**
  - Submission of Scoping Report to DMR → **February 2019**
- EIA/EMPr Phase
  - Submission of EIA/EMPr for Public Review → **June 2019**
  - Submission of EIA/EMPr Report to DMR → **July 2019**
- DMR decision → **November 2019**



## Way Forward

17

- Competent Authority questions and items requiring clarity,
  - *I.e. study approach, public participation, specialist studies, etc.;*
- Commenting Authorities comments or Amendments required based on project introduction;
- Concerns or Gaps based on project introduction

## Questions

18

**DISCUSSION**

**Thank You**