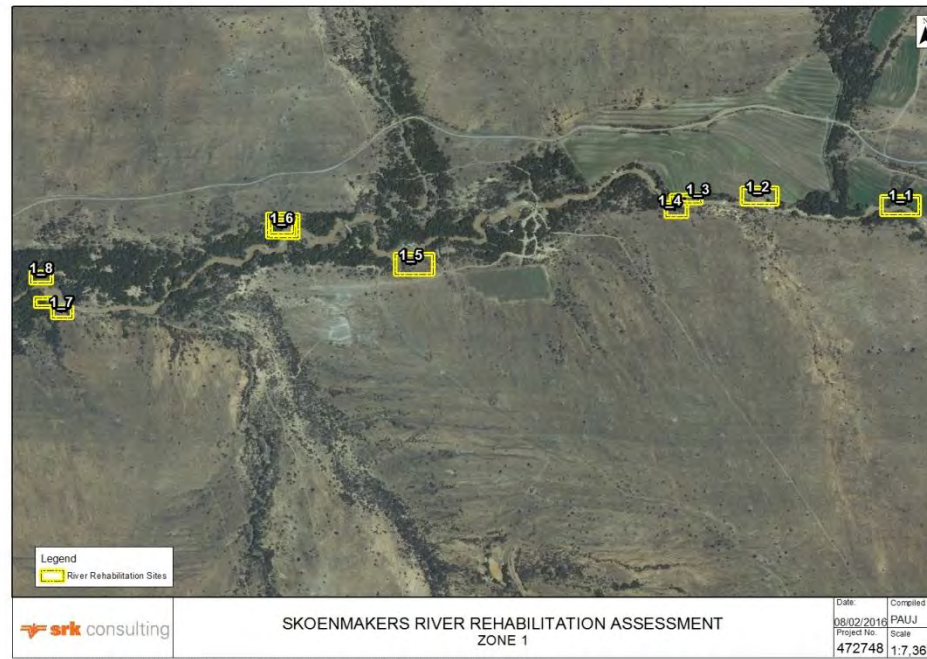
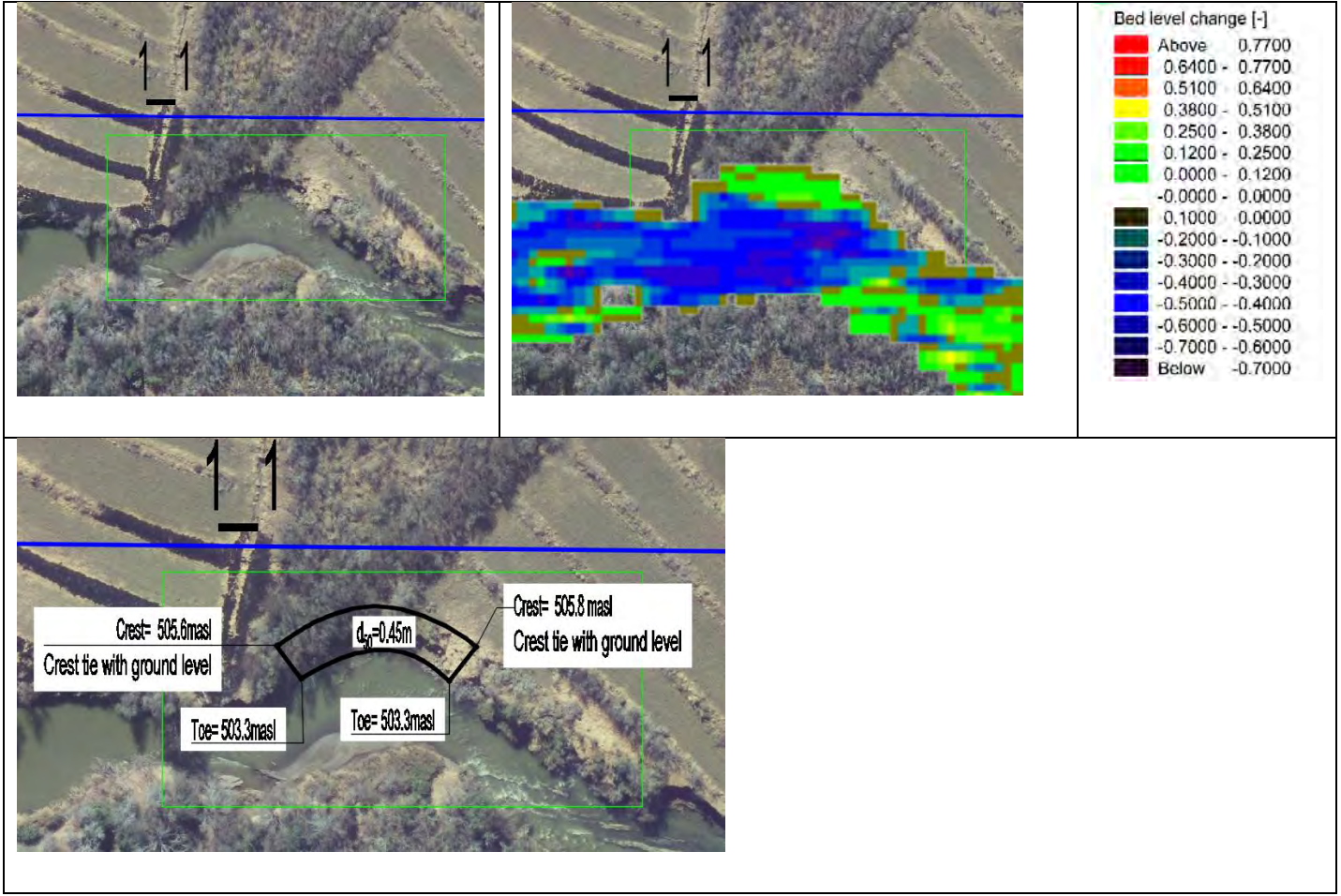


**Zone 1**



**Zone 1\_1** This area is within the servitude and has unstable banks encroaching farmland.

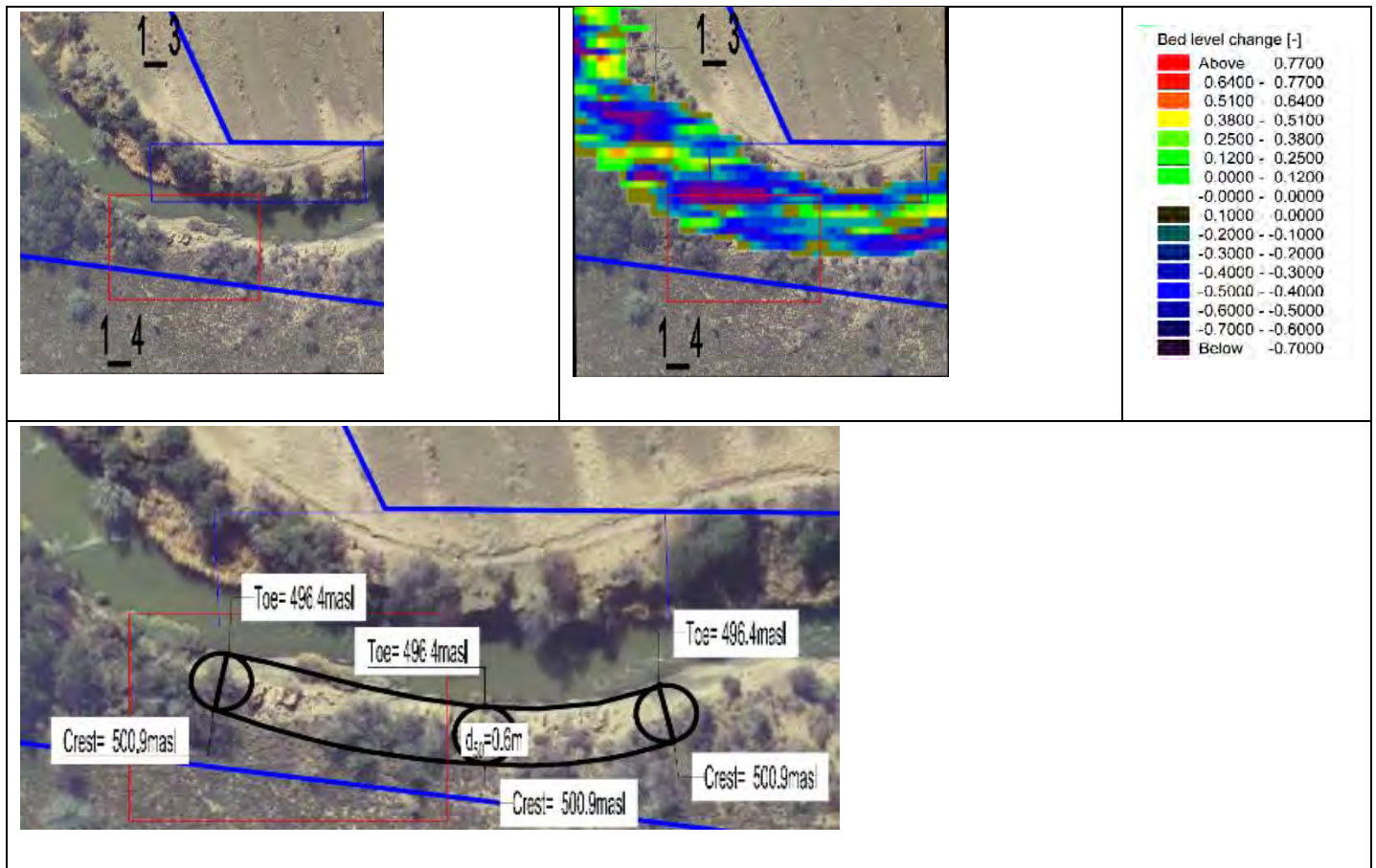


**Zone 1\_2** This area is within the servitude and has unstable banks. Due to the bedrock at the location, the banks do not need protection and the servitude seems incorrect.

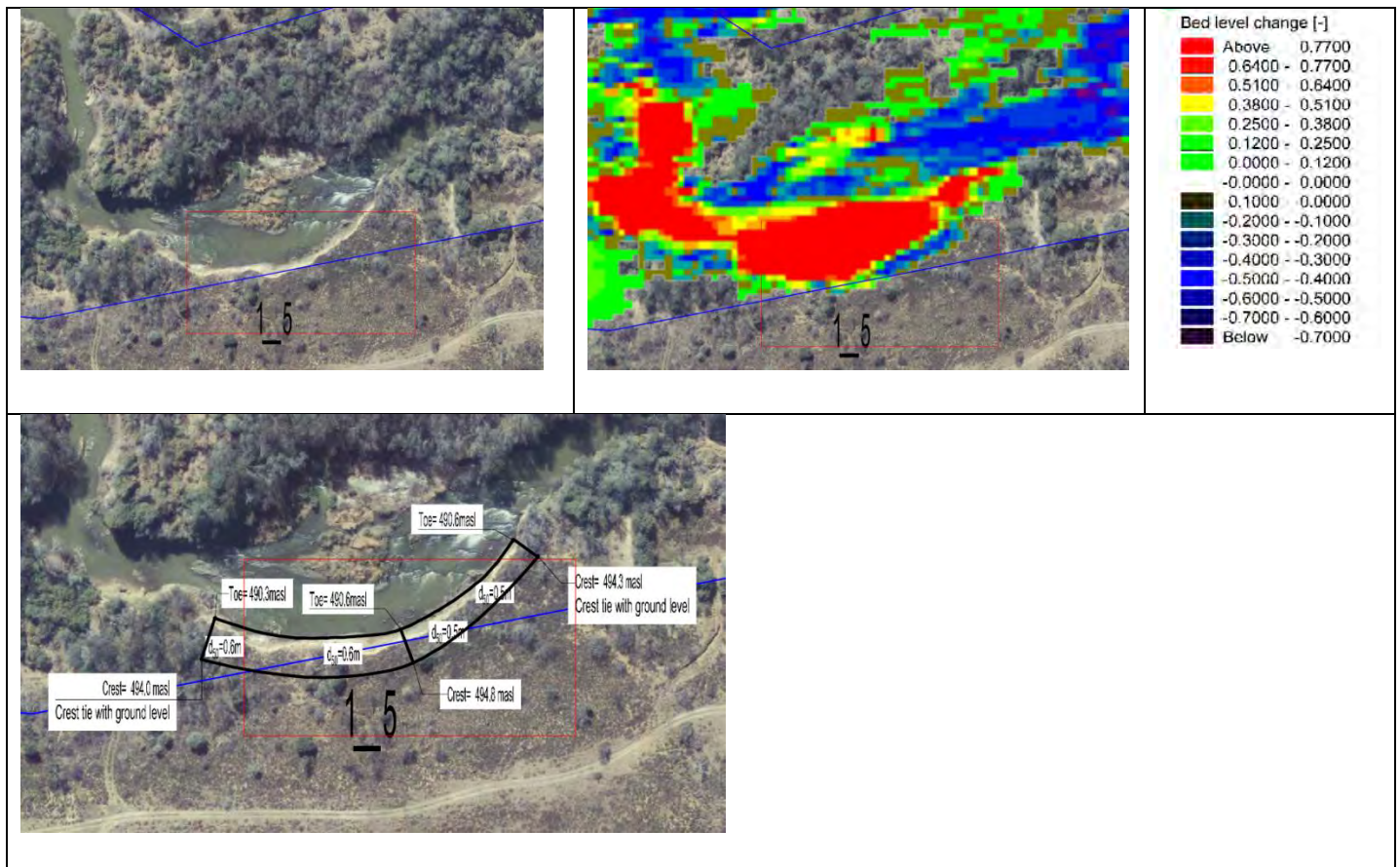




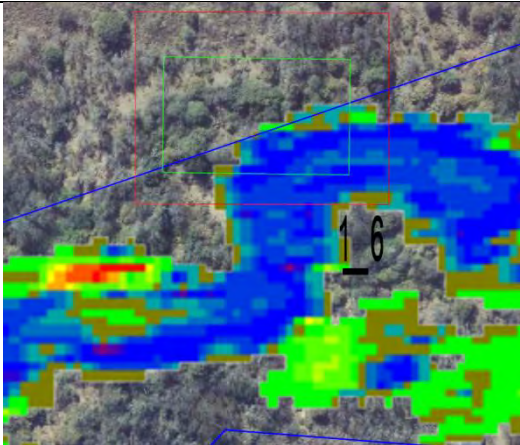
**Zone 1\_3 and 1\_4** This area is within the servitude and protection does not seem necessary.



**Zone 1\_5** This area is within the servitude and has unstable banks encroaching a road.



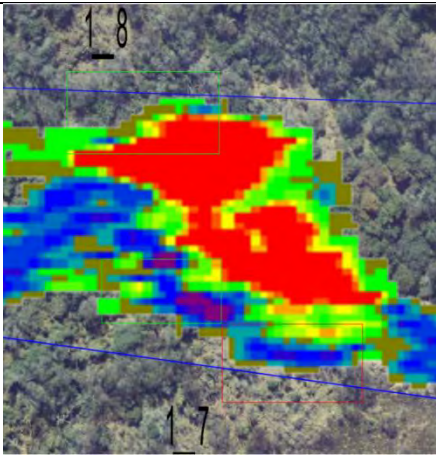
**Zone 1\_6** This area has unstable banks crossing the servitude.



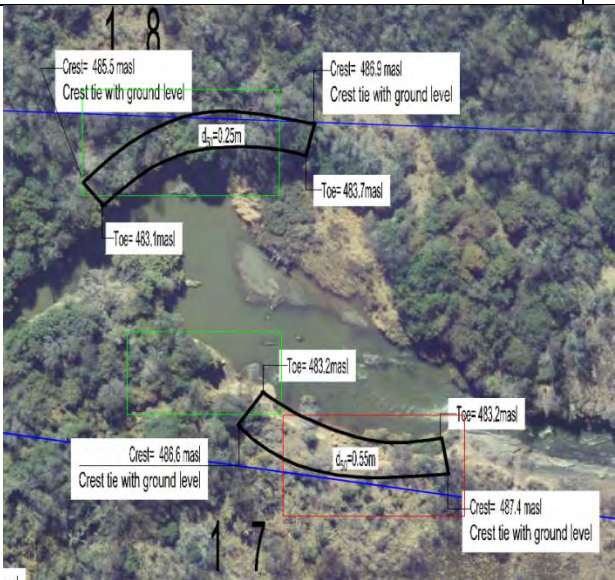


**Zone 1\_7** This area is within the servitude but encroaching the servitude.

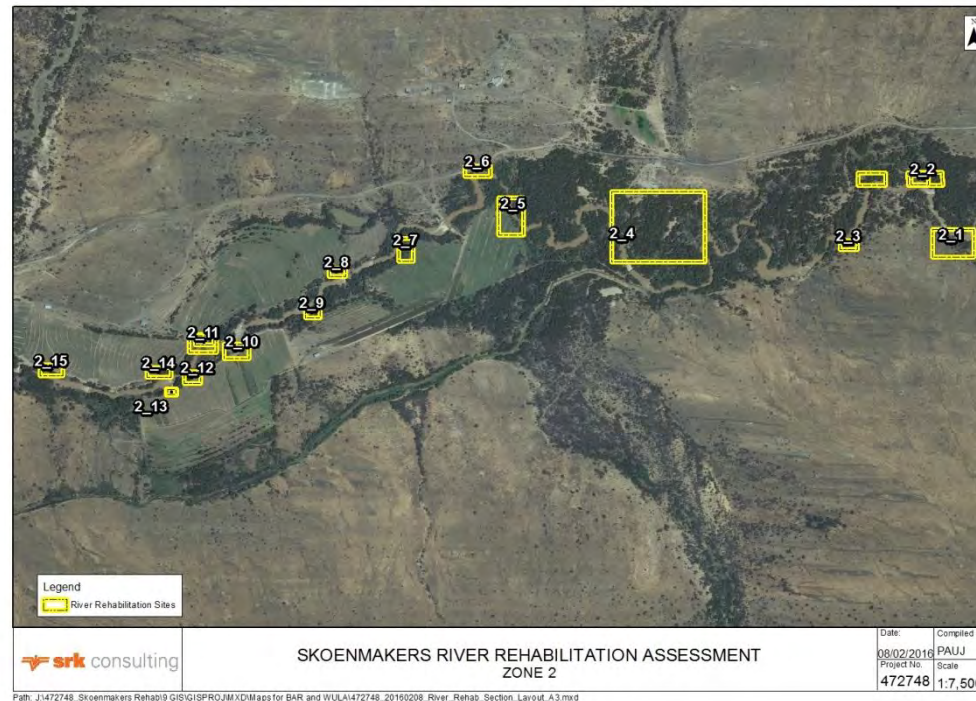
**Zone 1\_8** This area has banks partially crossing the servitude.



Dead level change [-]	
Above	0.7700
0.6400 -	0.7700
0.5100 -	0.6400
0.3800 -	0.5100
0.2500 -	0.3800
0.1200 -	0.2500
0.0000 -	0.1200
-0.0000 -	0.0000
-0.1000 -	0.0000
-0.2000 -	-0.1000
-0.3000 -	-0.2000
-0.4000 -	-0.3000
-0.5000 -	-0.4000
-0.6000 -	-0.5000
-0.7000 -	-0.6000
Below	-0.7000



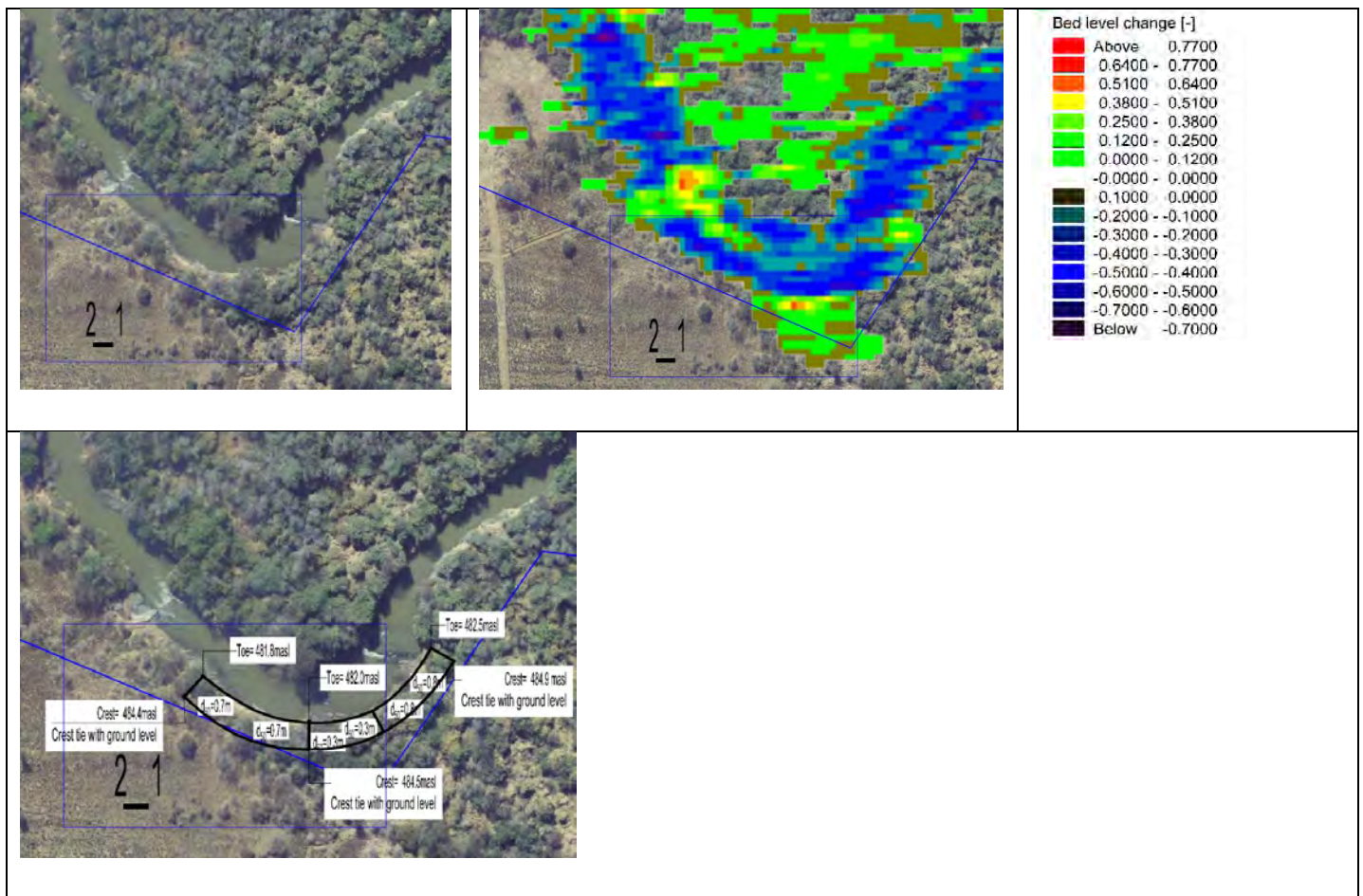
## **Zone 2**



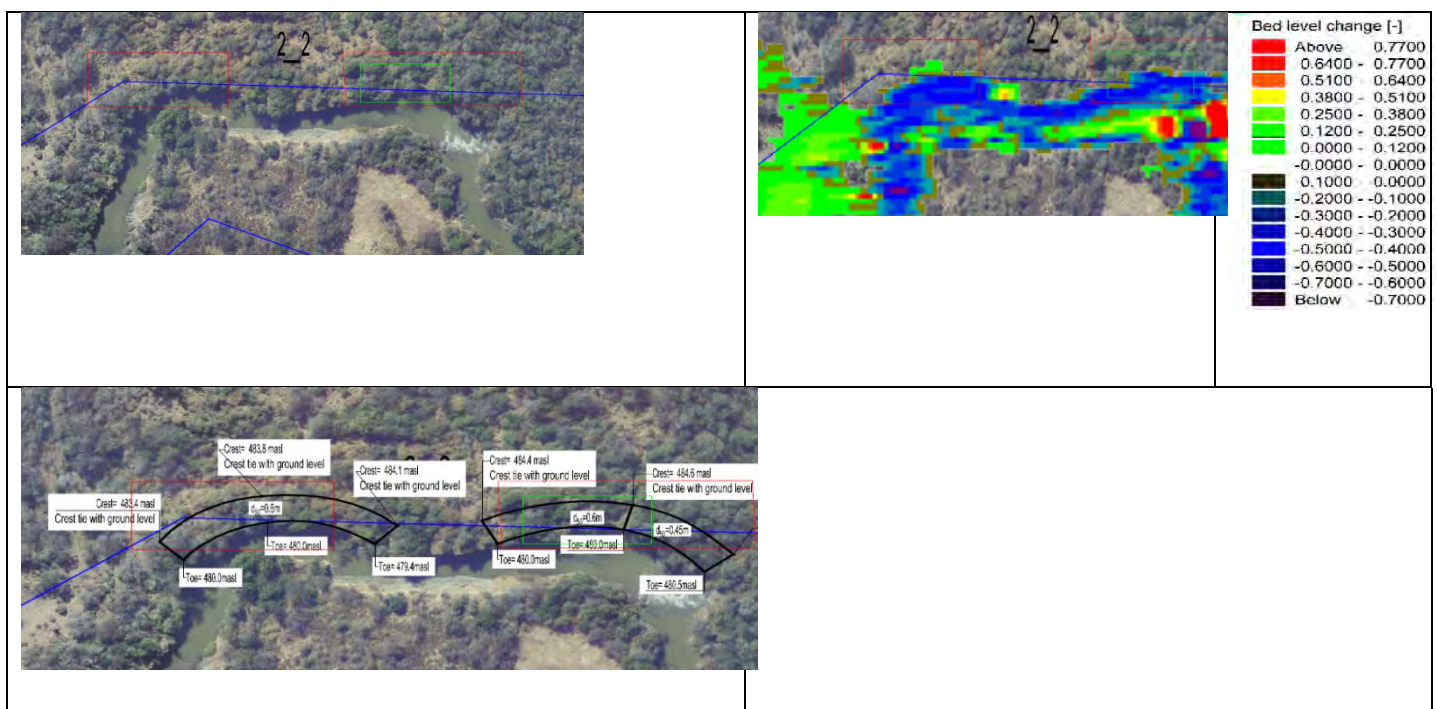
Path: J:\472748\_Skoenmakers Rehab\GIS\GISPRO\JMXDM\Maps for BAR and WULA\472748\_20150208\_River\_Rehab\_Section\_Layout\_A3.mxd



**Zone 2\_1** The banks are encroaching the servitude but protection does not seem necessary.

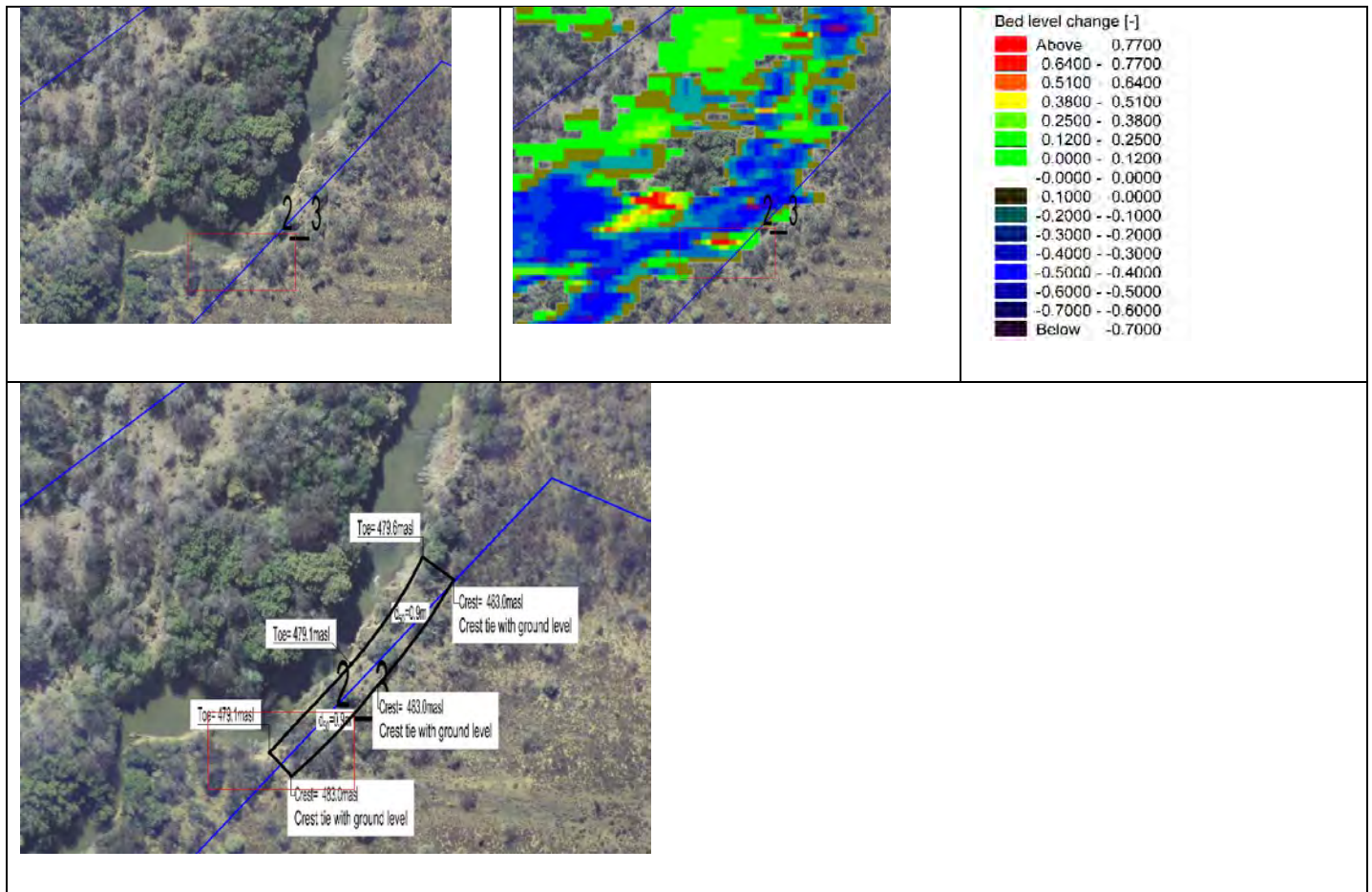


**Zone 2\_2** This area has unstable banks crossing the servitude.

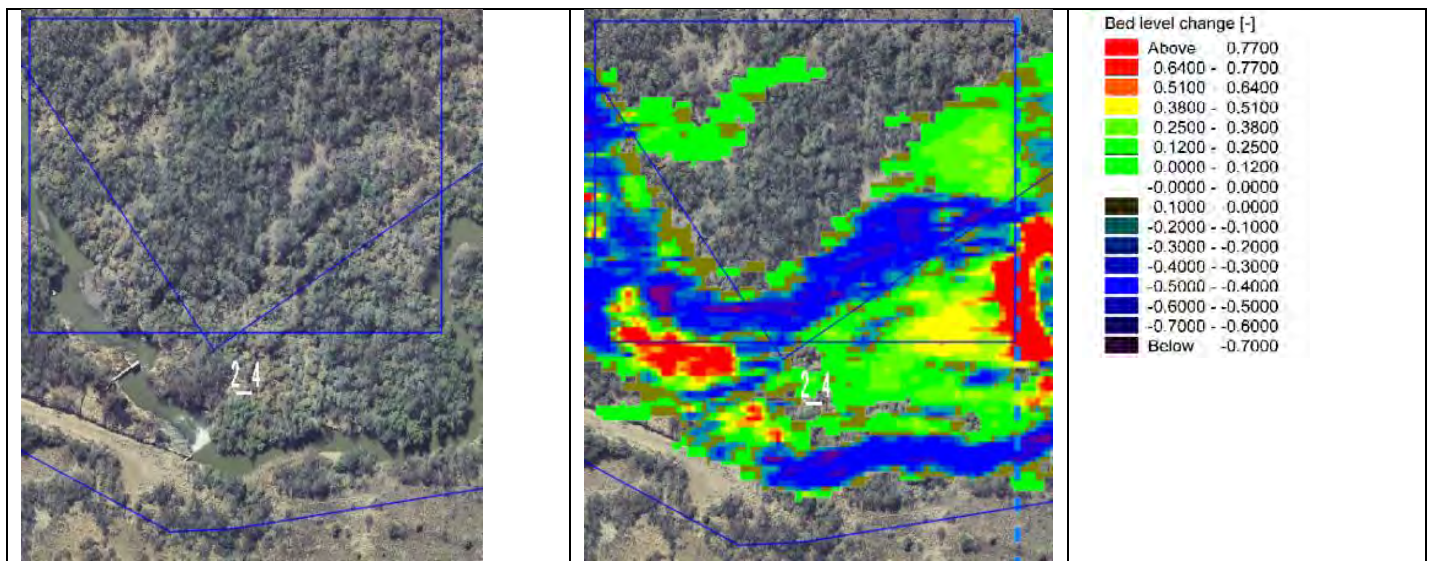




**Zone 2\_3** This area has unstable banks are encroaching on the servitude.



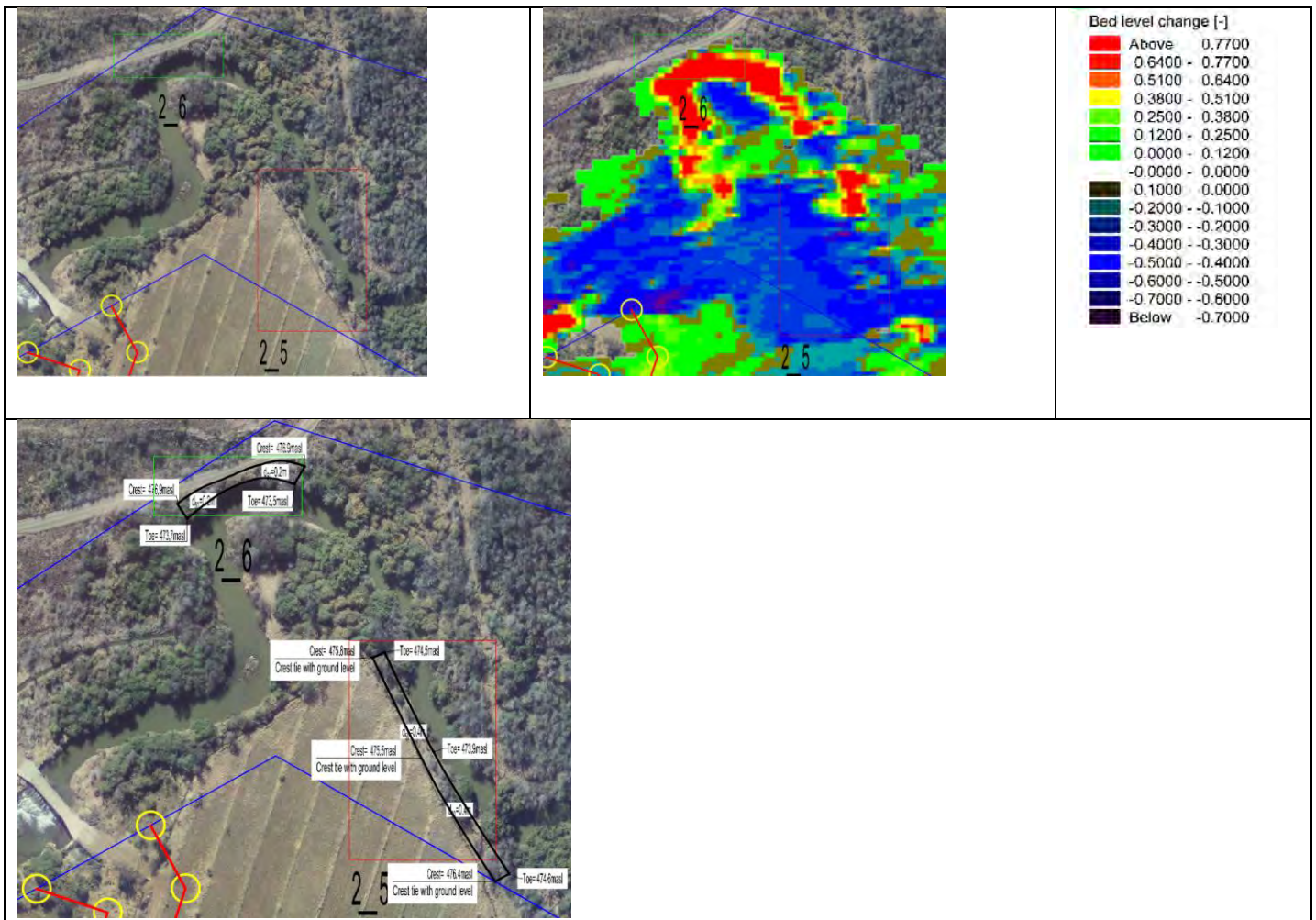
**Zone 2\_4** This area crosses the servitude but due the wide flood plain flow, protection is not viable



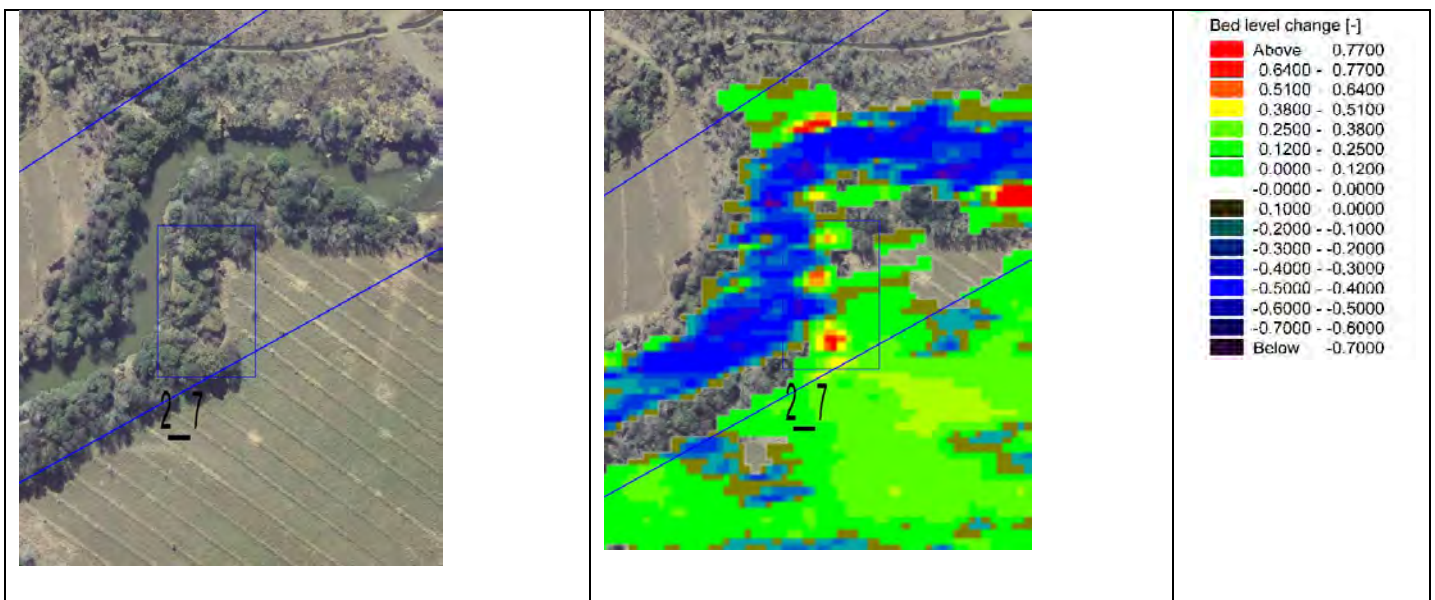


**Zone 2\_5** This area is within the servitude but encroaches farmland that is within the servitude.

**Zone 2\_6** This area is within the servitude but has unstable banks that encroach a road.

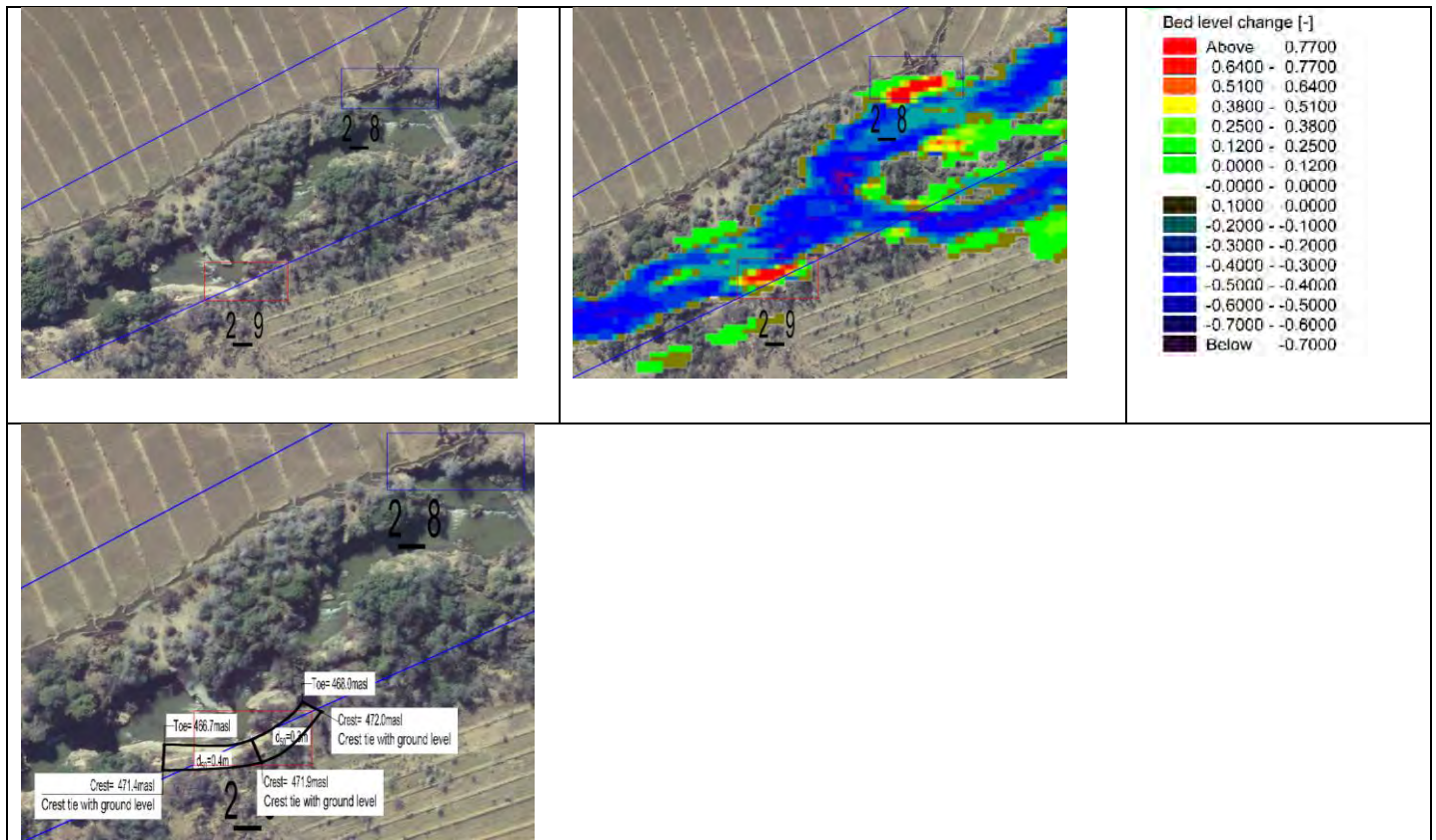


**Zone 2\_7** This area is within the servitude but encroaches farmland that is within the servitude. Protection does not seem necessary.



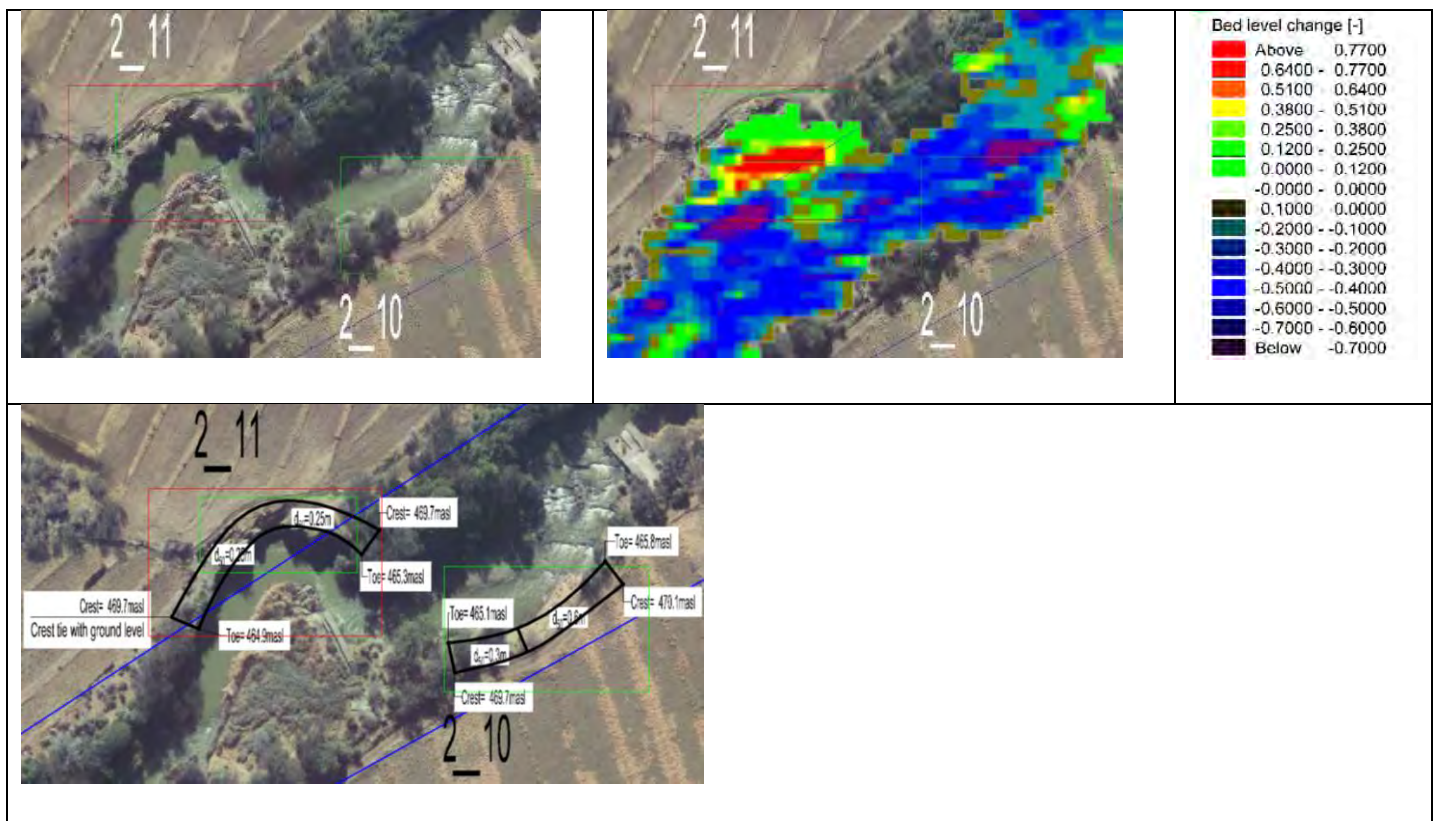


**Zone 2\_8 and 2\_9** The banks are encroaching the servitude and farmland



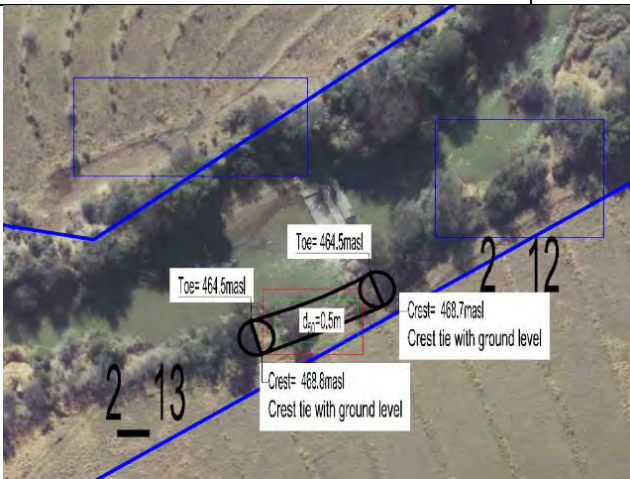
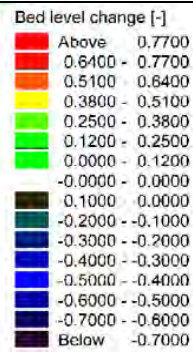
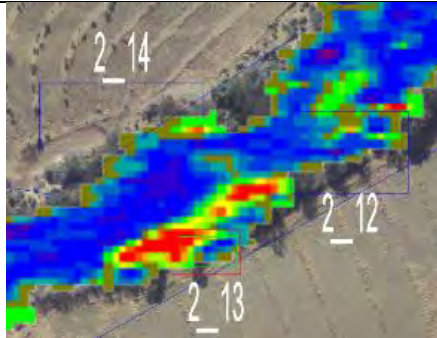
**Zone 2\_10** The banks are encroaching the road but within the servitude.

**Zone 2\_11** The unstable banks are crossing the servitude and encroaching onto farmland.



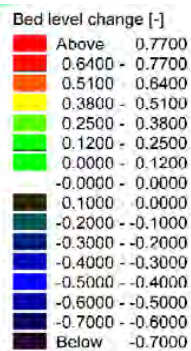
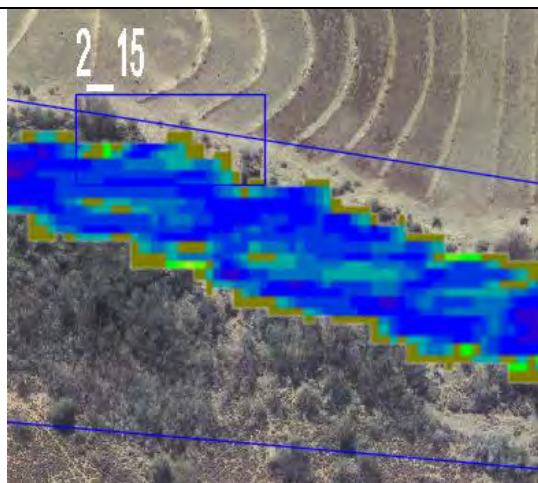
**Zone 2\_12 and 2\_14** This area is within the servitude but encroaches farmland. An old weir diverts water inducing erosion. Protection does not seem necessary.

**Zone 2\_13** The unstable banks are encroaching the servitude and farmland.



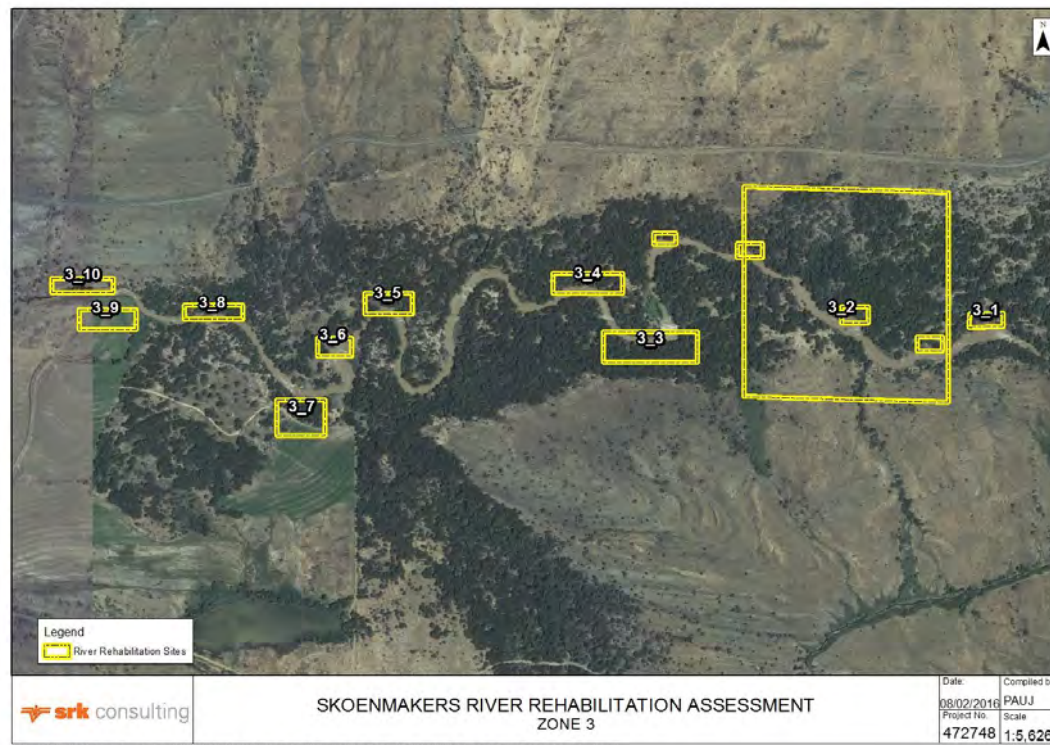


**Zone 2\_15** The unstable banks are encroaching the servitude and farmland. Protection was deemed not necessary

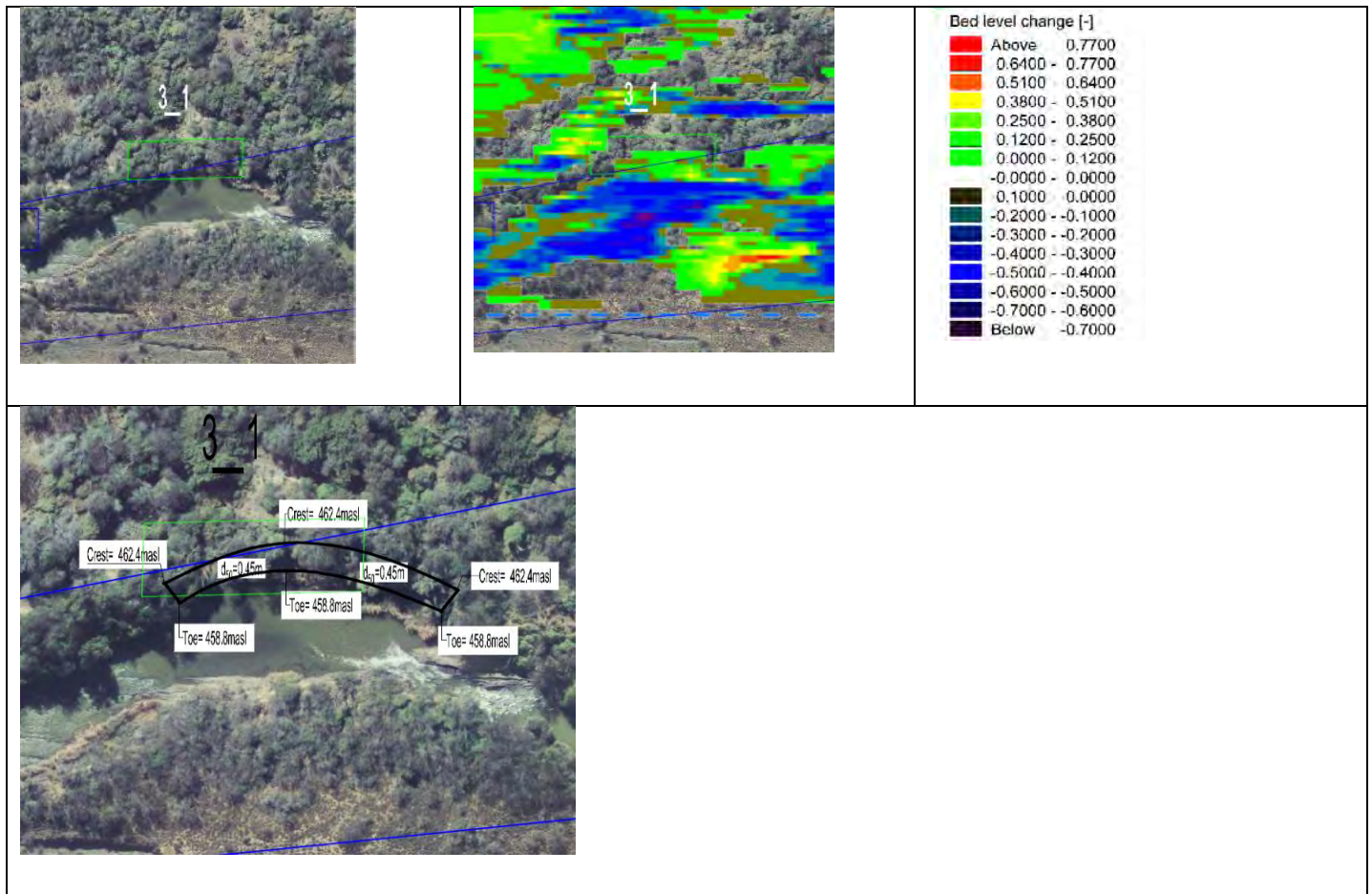




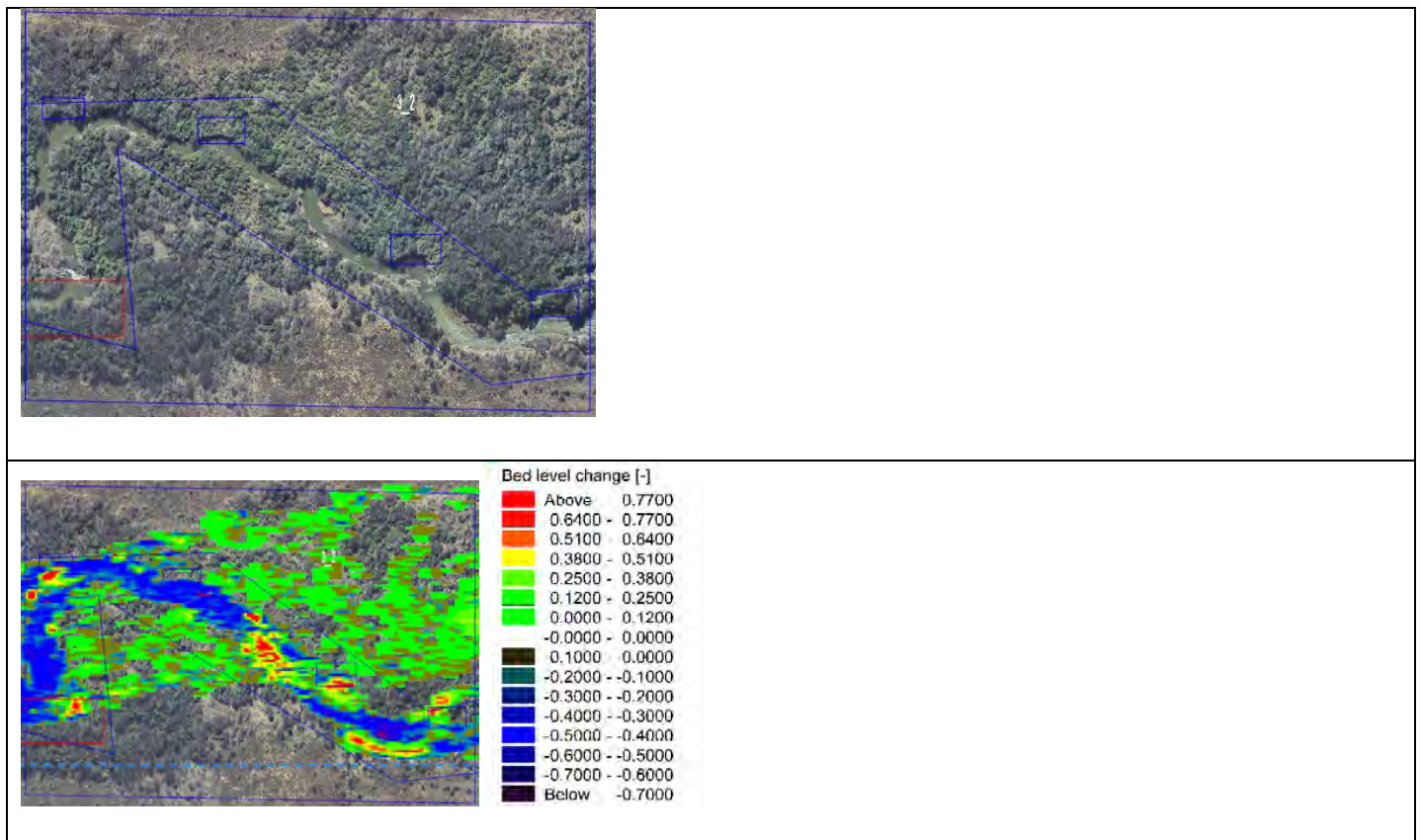
## **Zone 3**



**Zone 3\_1** The zone has unstable banks crossing the servitude.



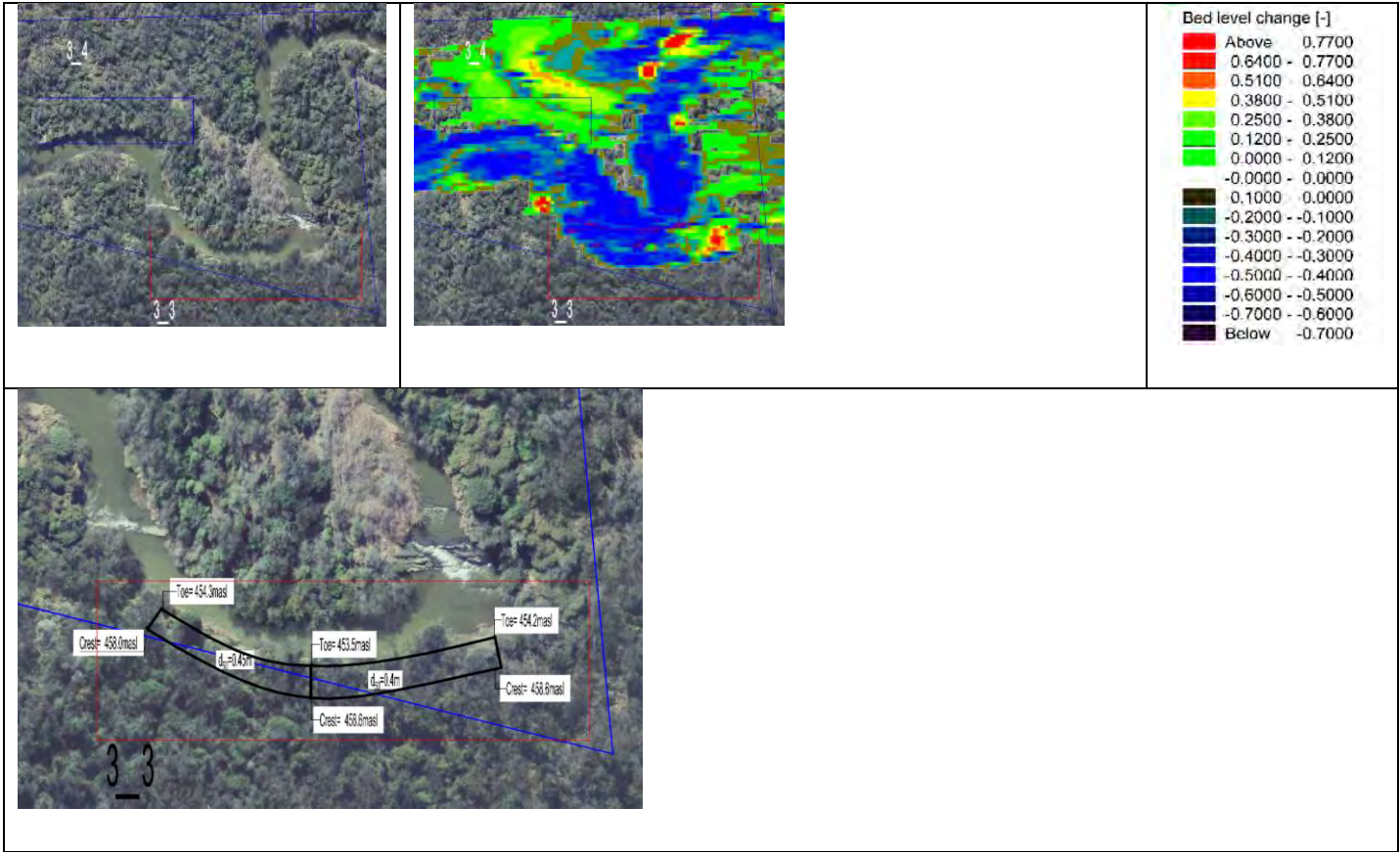
**Zone 3\_2** Flow in this area is in a wide floodplain crossing the servitude and protection in not viable.





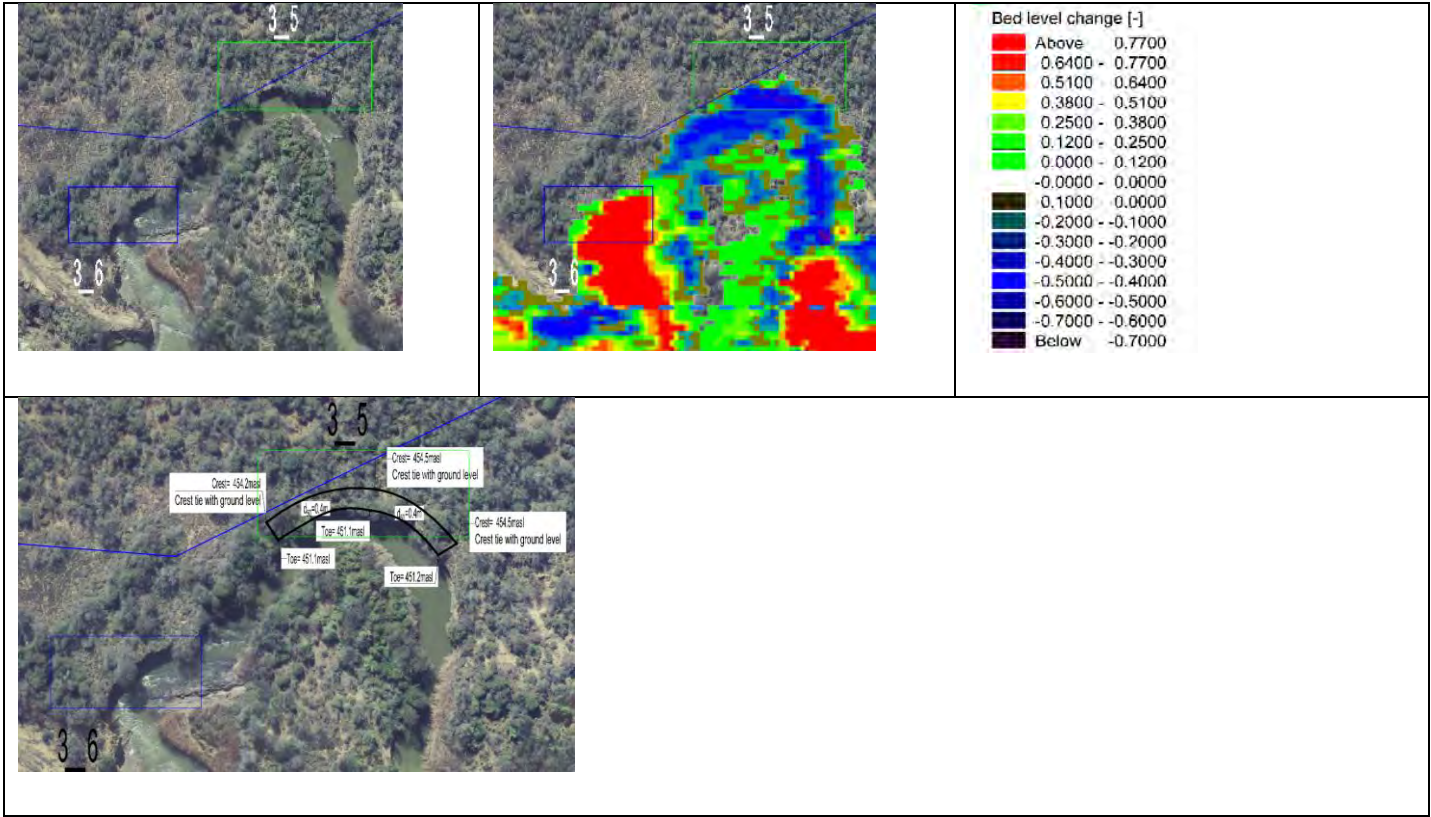
**Zone 3\_3** The zone has unstable banks crossing the servitude

**Zone 3\_4** Flow in this area is in a wide floodplain and protection is not necessary.

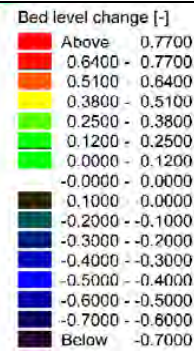
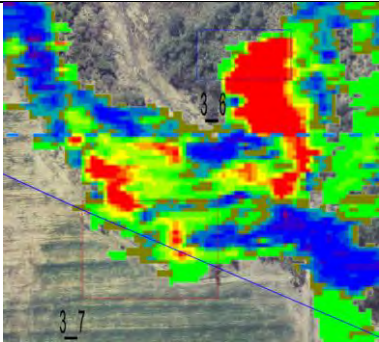


**Zone 3\_5** The zone has unstable banks crossing the servitude.

**Zone 3\_6** The zone has unstable banks but within the servitude. Protection was found not necessary.

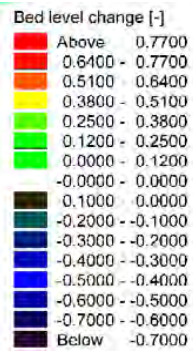
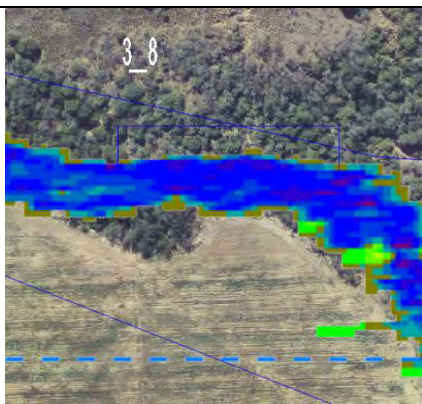


**Zone 3\_7** The zone has unstable banks encroaching the servitude and road.



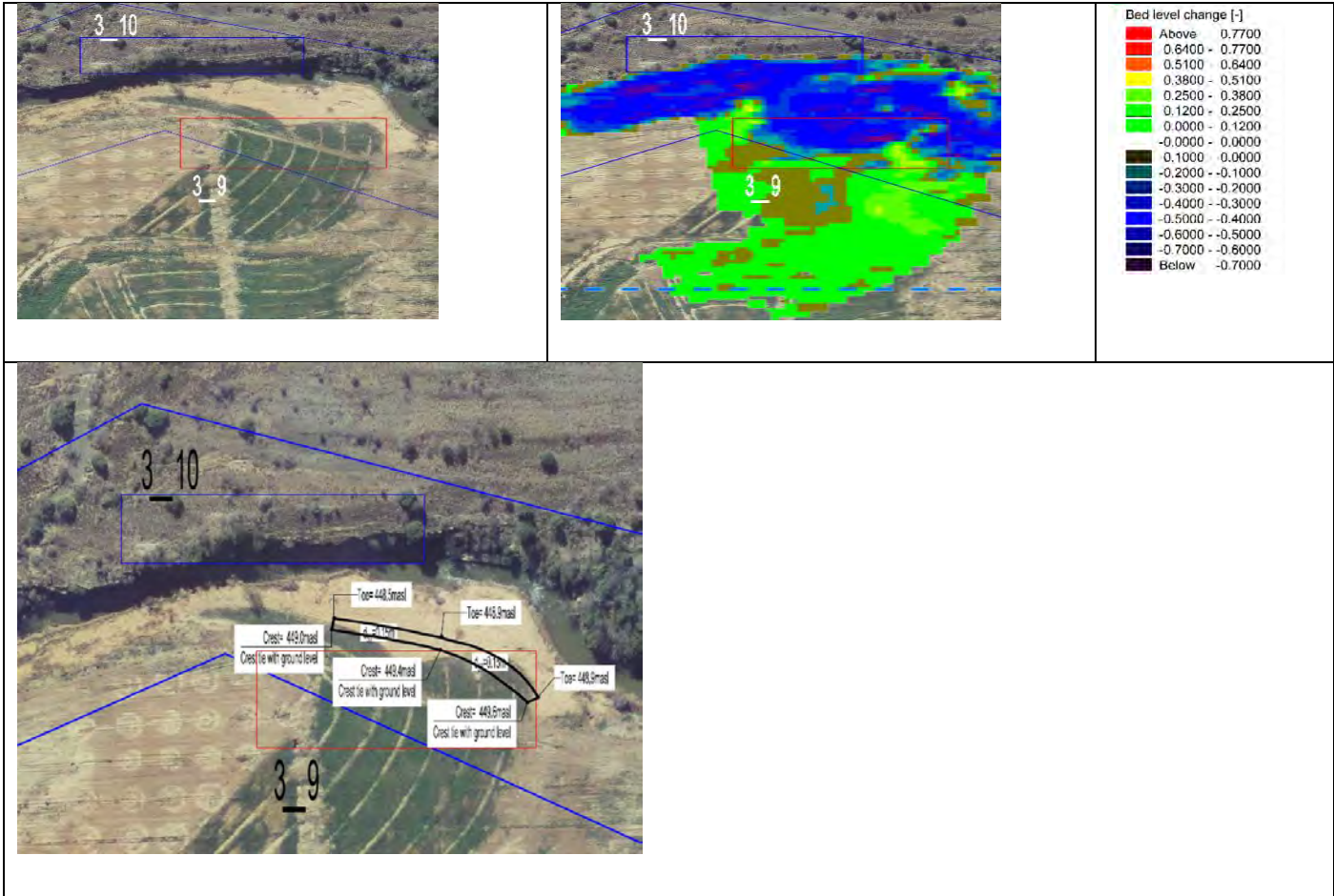


**Zone 3\_8** The zone has unstable banks within the servitude. Protection was found not necessary.



**Zone 3\_9** The zone has unstable banks encroaching the servitude and farmland.

**Zone 3\_10** The zone has unstable banks within the servitude. Protection was found not necessary.

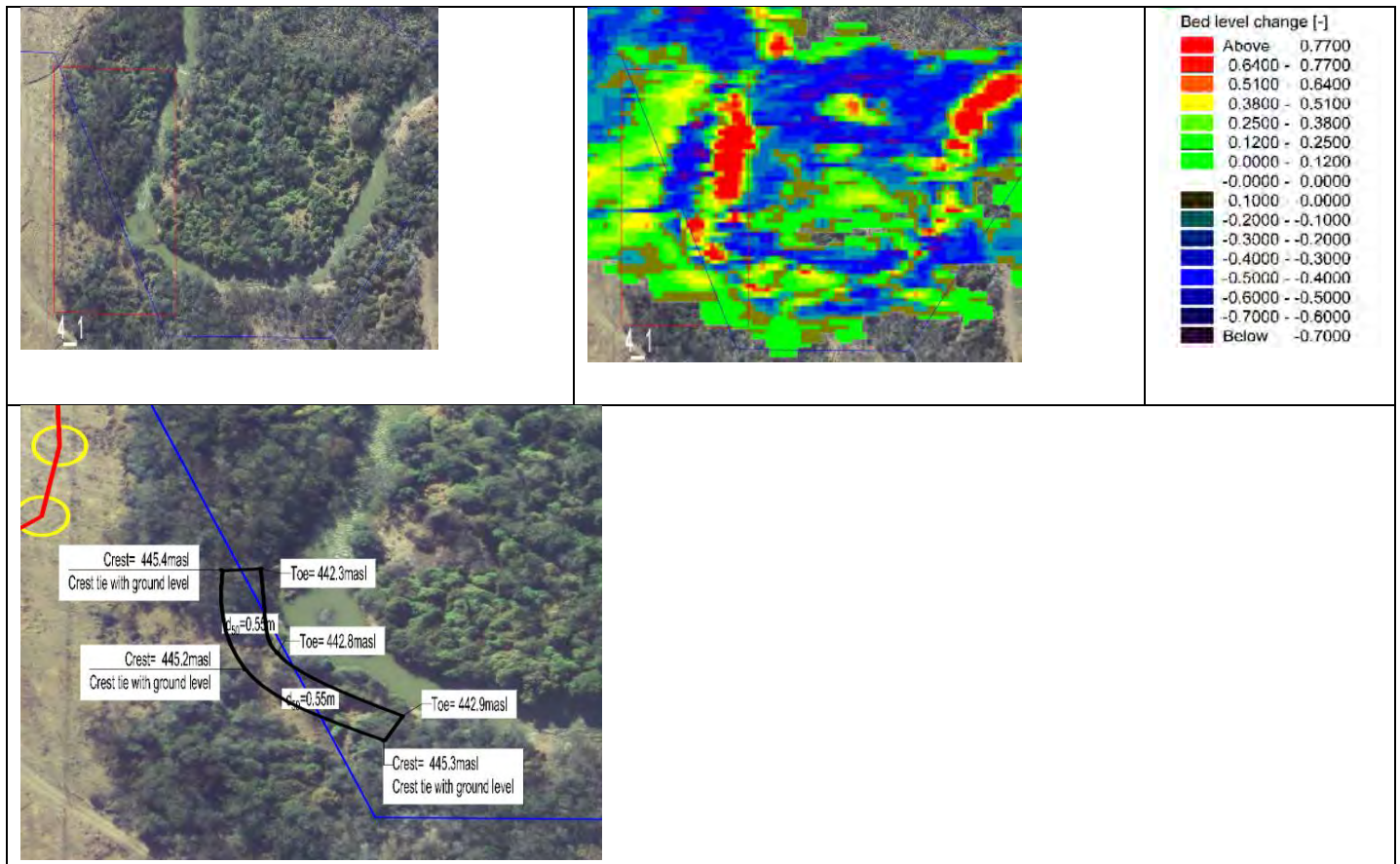


## **Zone 4**

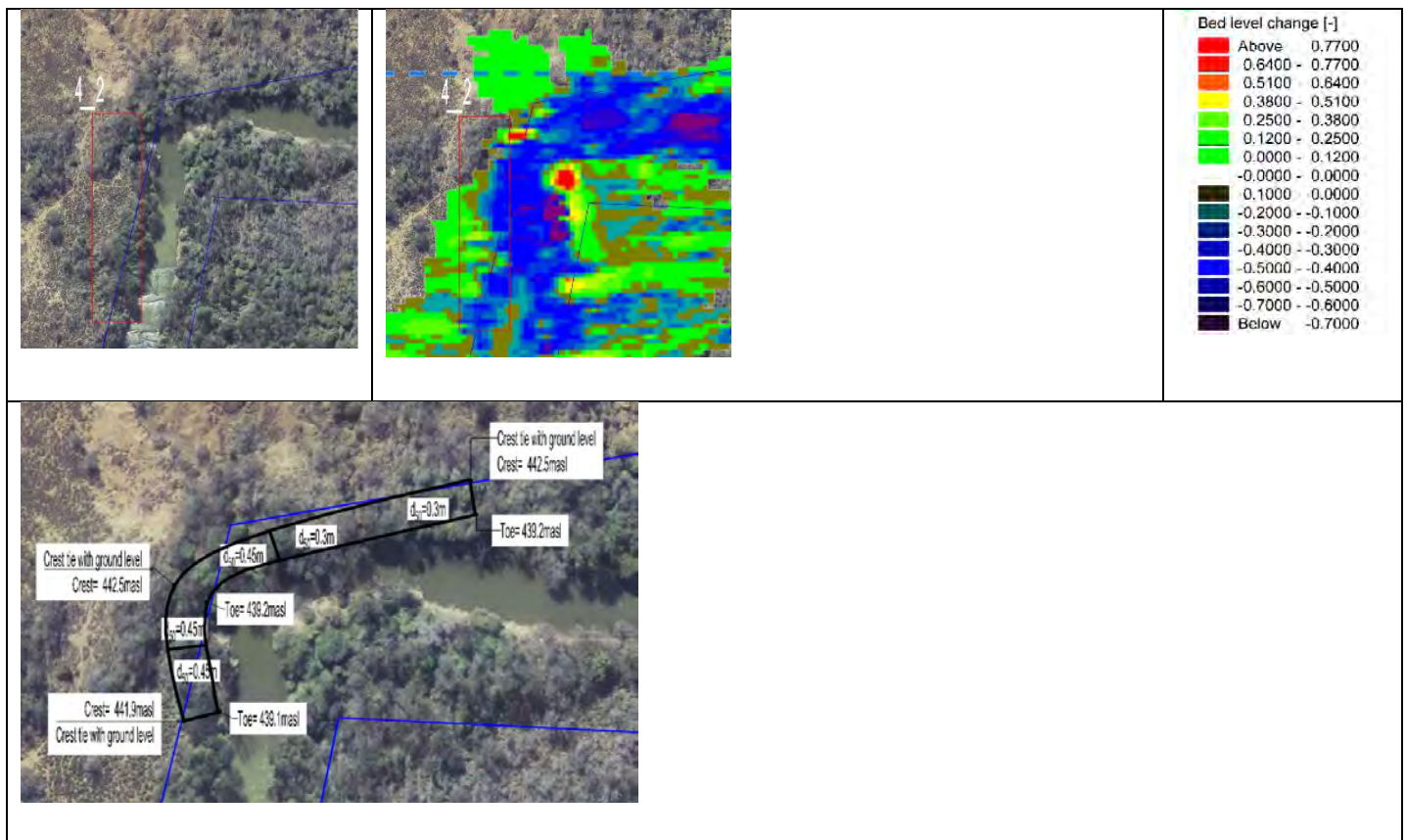




**Zone 4\_1** The zone has unstable banks crossing the servitude and encroaching the road.

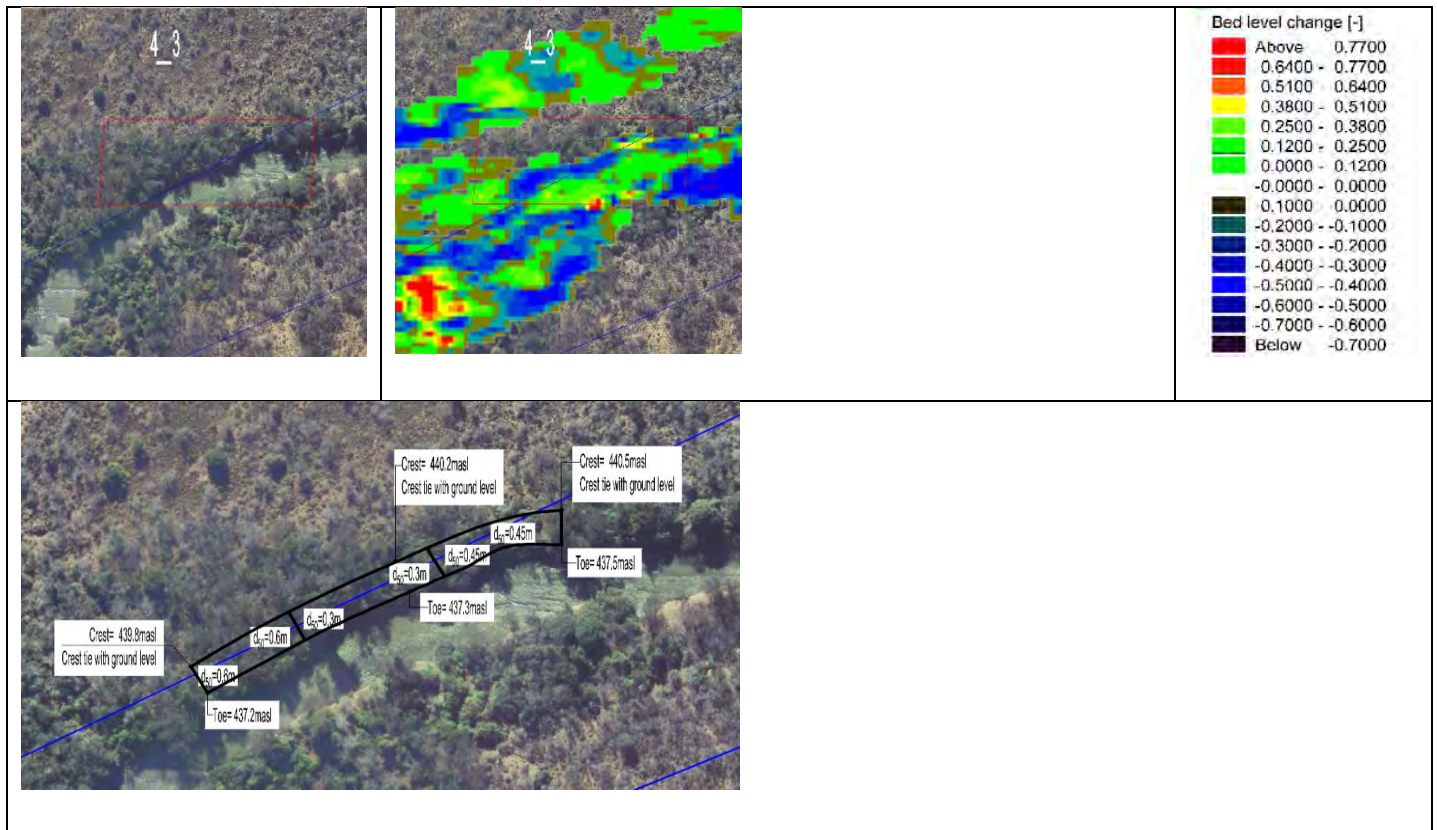


**Zone 4\_2** The zone has unstable banks crossing the servitude and encroaching the road.

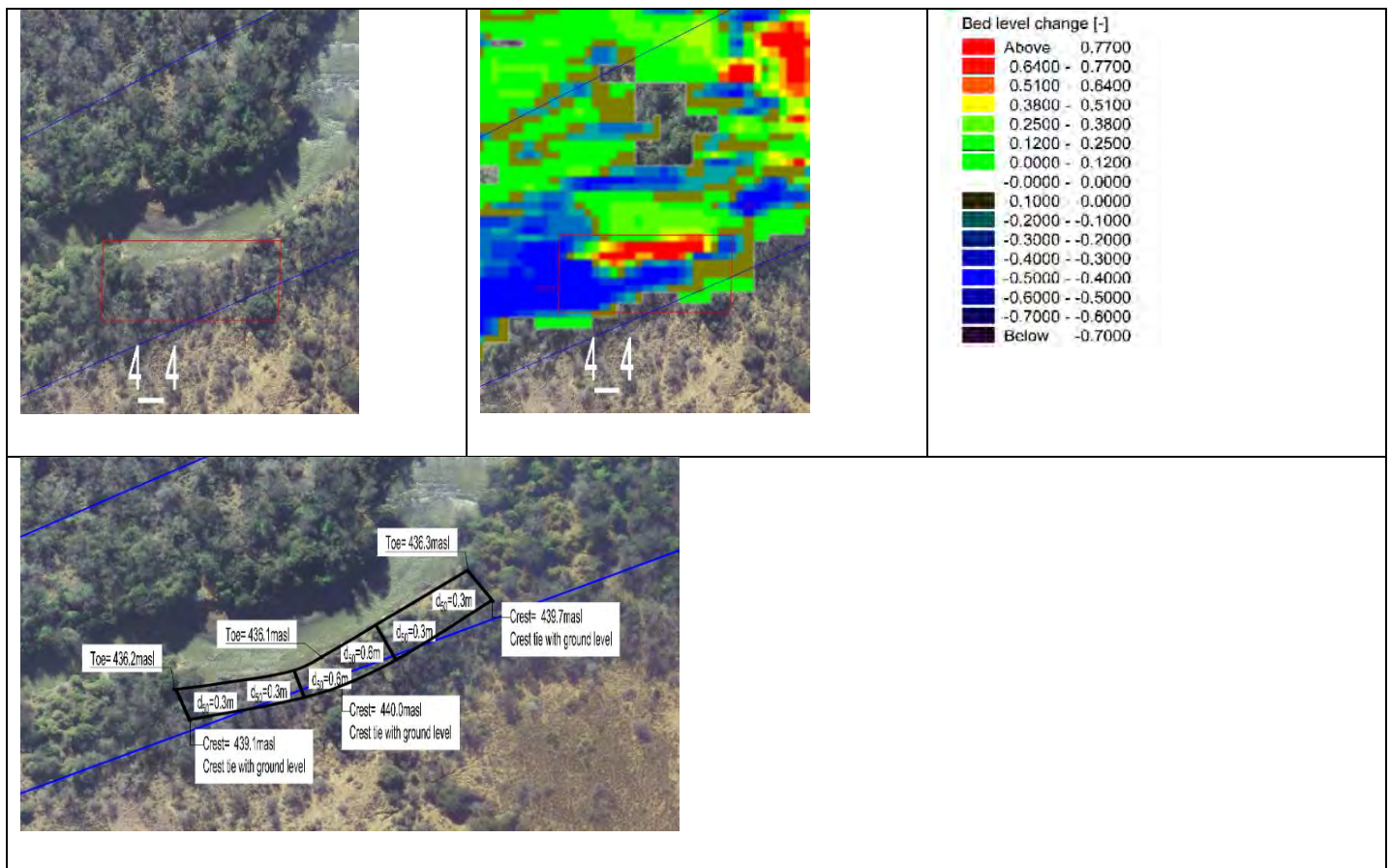




**Zone 4\_3** The zone has unstable banks crossing the servitude.

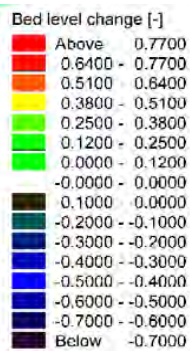
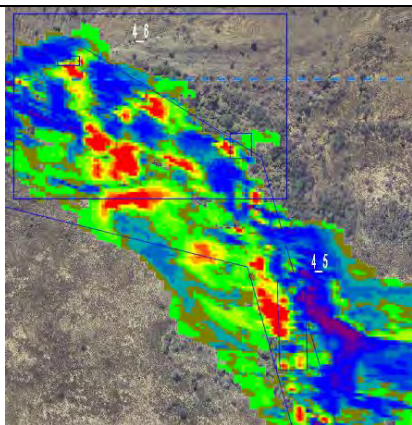


**Zone 4\_4** The zone has unstable banks crossing the servitude and encroaching the road.





**Zone 4\_5 and 4\_6** Flow in this area is on a wide floodplain and erosion induced by a tributary thus protection is deemed not necessary.

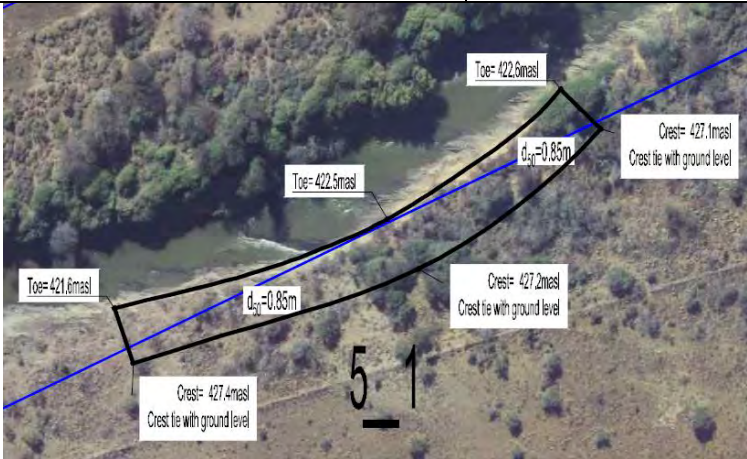
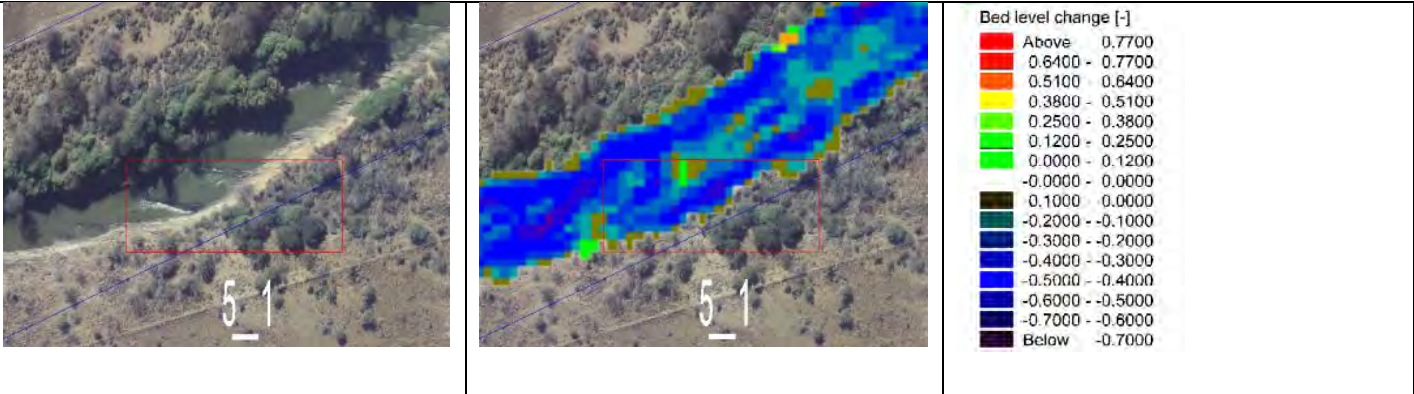


## **Zone 5**

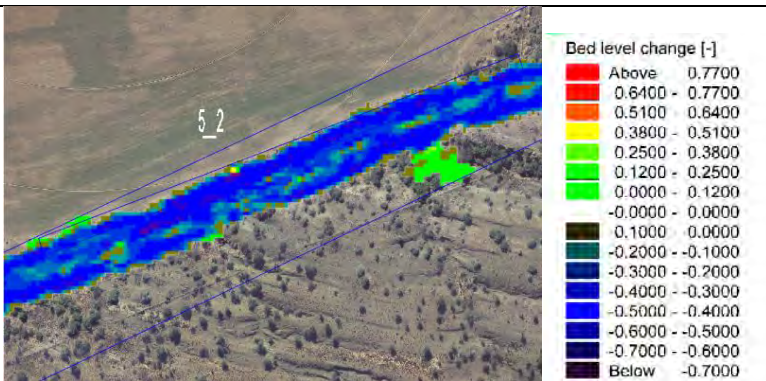
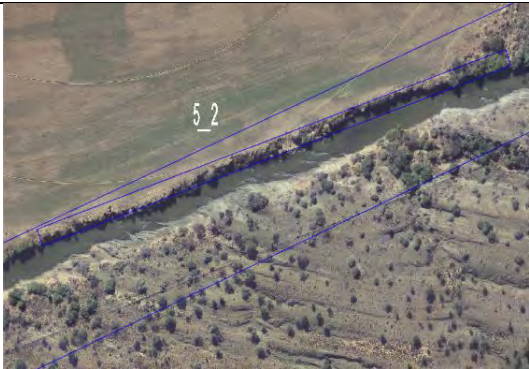




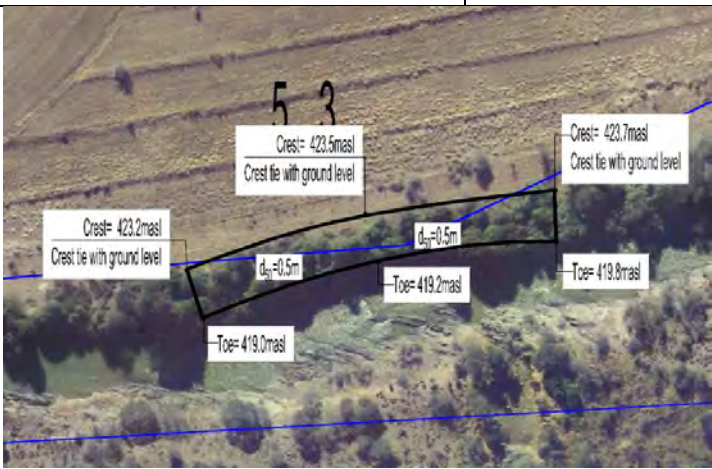
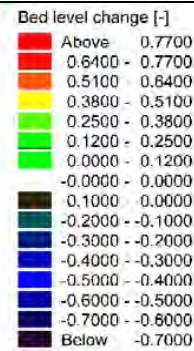
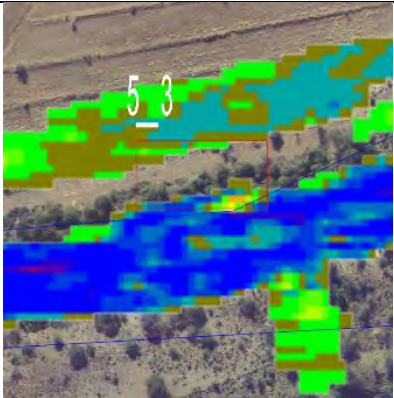
**Zone 5\_1** The zone has banks encroaching the servitude.



**Zone 5\_2** The zone has unstable banks encroaching servitude and farmland. Protection in this zone does not seem necessary.

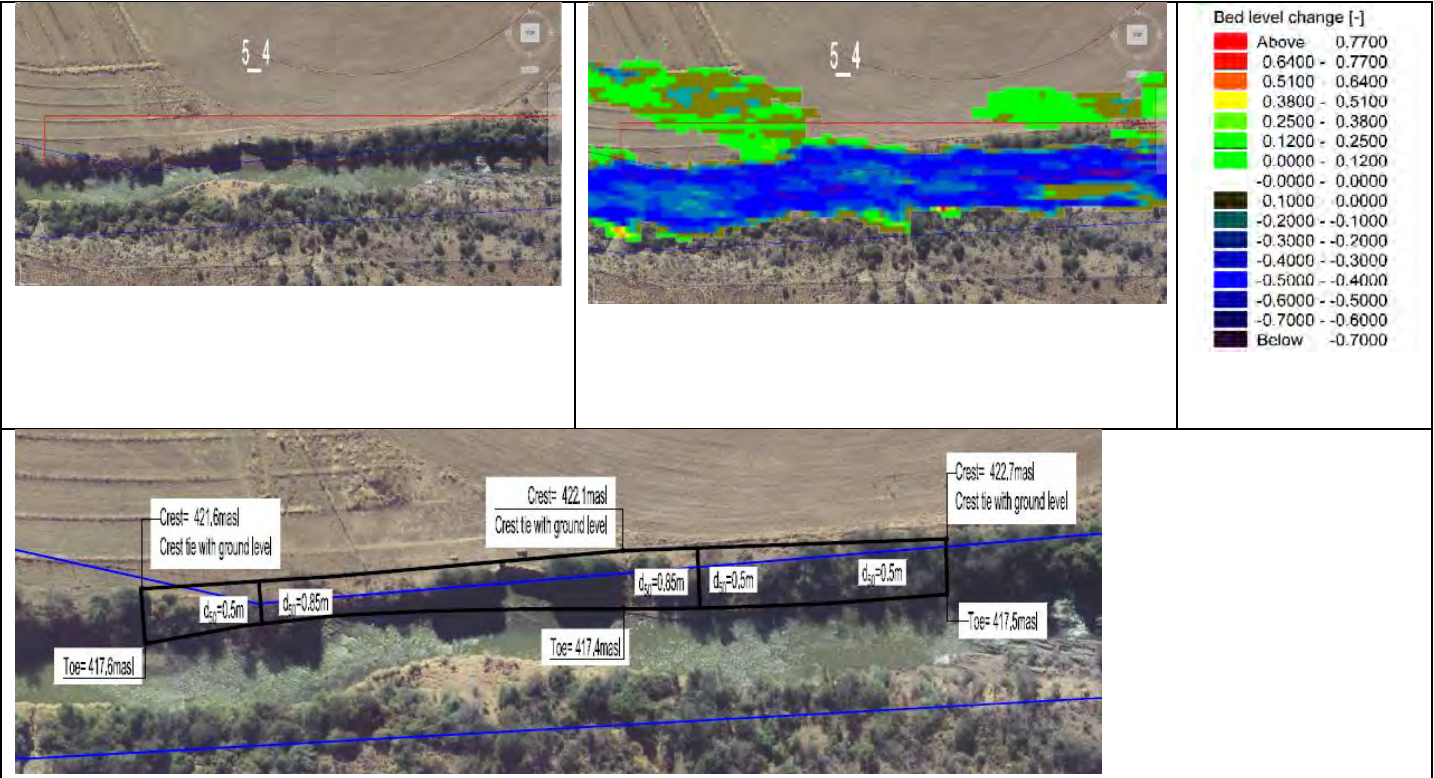


**Zone 5\_3** The zone has banks crossing the servitude and encroaching farmland.

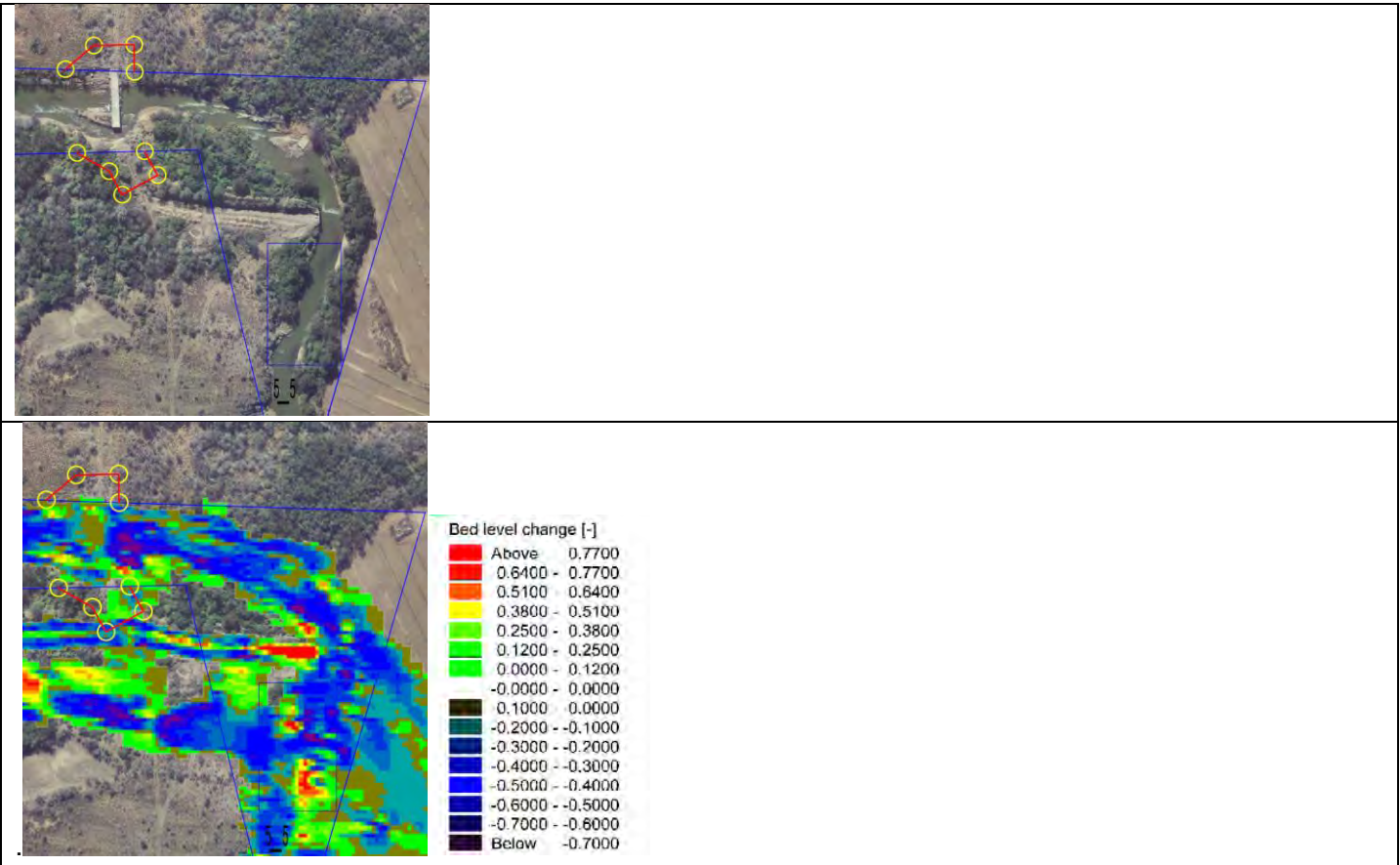




**Zone 5\_4** The zone has banks crossing the servitude.

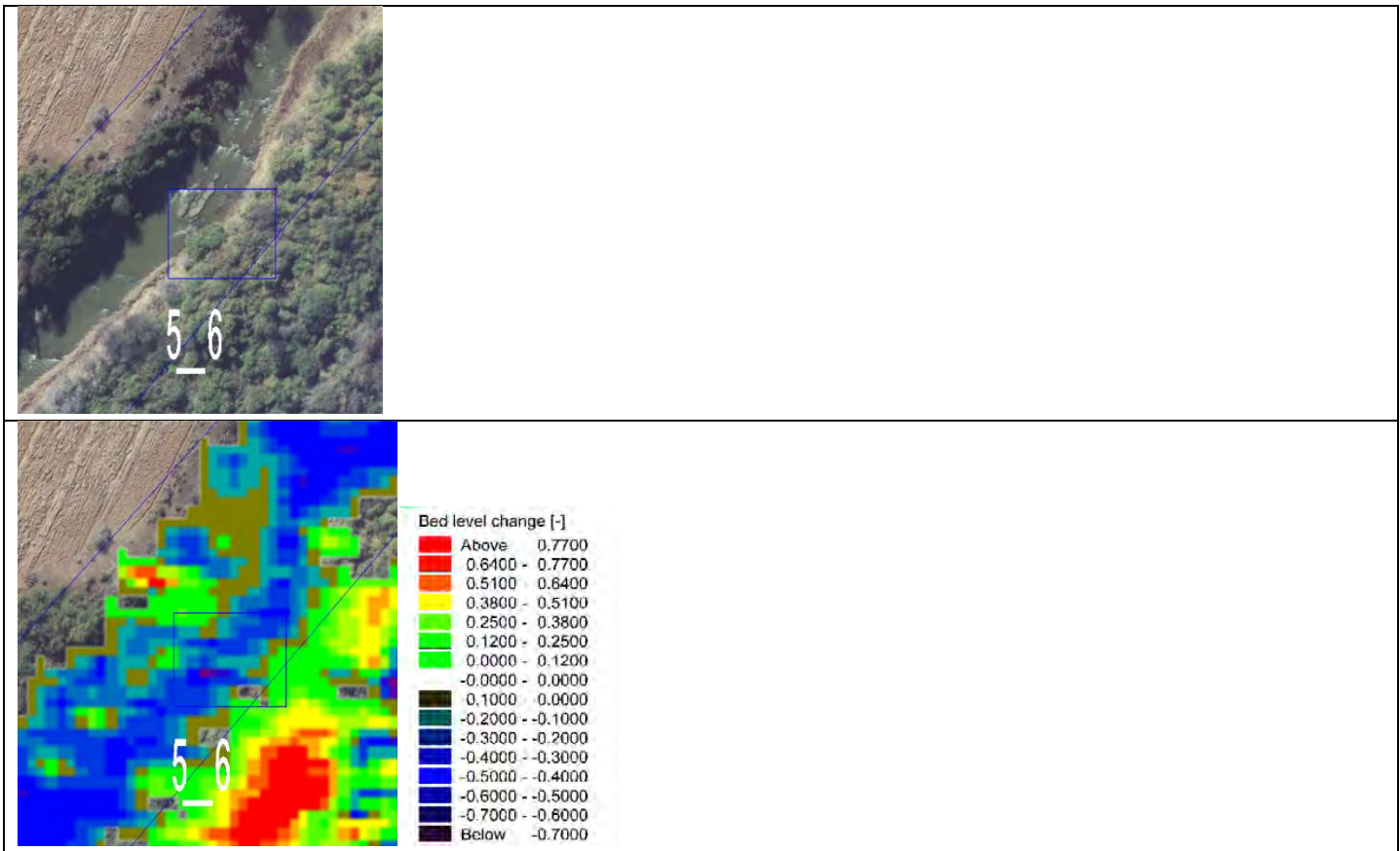


**Zone 5\_5** The zone has banks within the servitude. Flows are wide in the floodplain and protection not necessary.

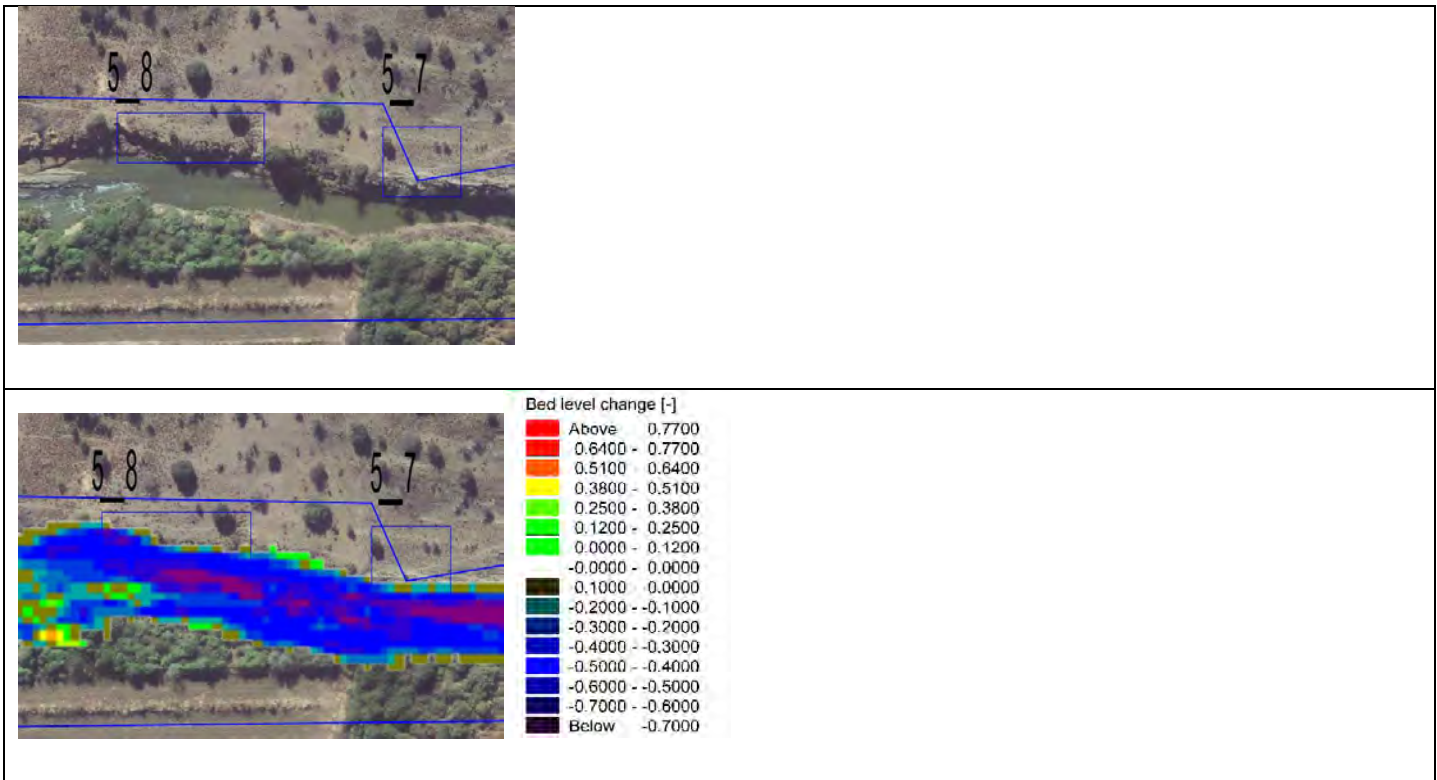




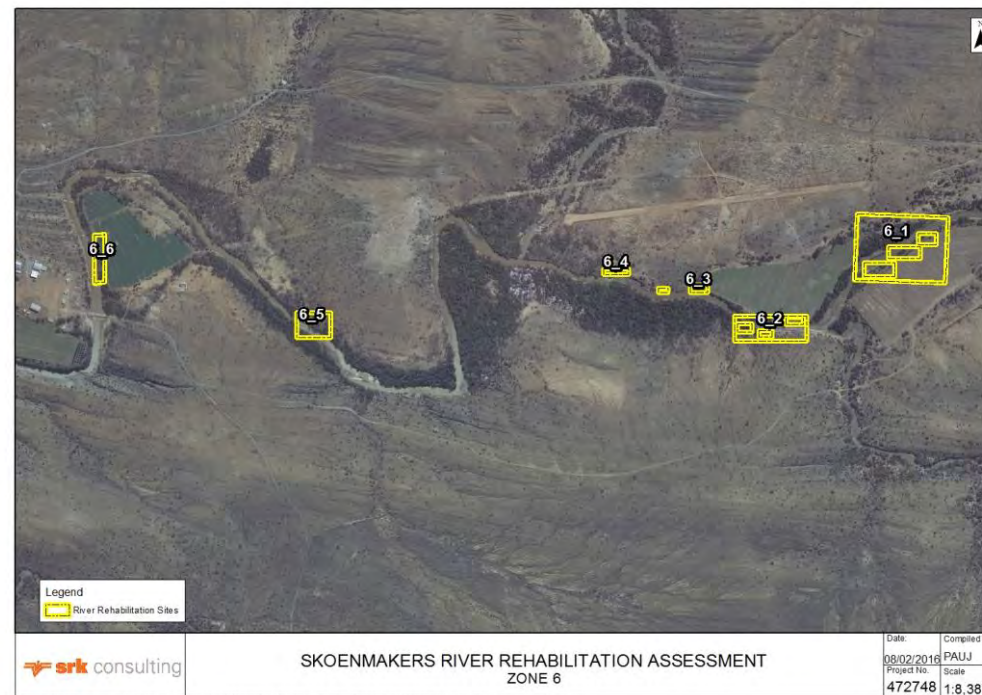
**Zone 5\_6** The zone has banks within the servitude. Flows are wide on the floodplain and protection not necessary.



**Zone 5\_7and 5\_8** Unstable banks within the servitude. The servitude seems to be incorrect and protection is deemed not necessary.

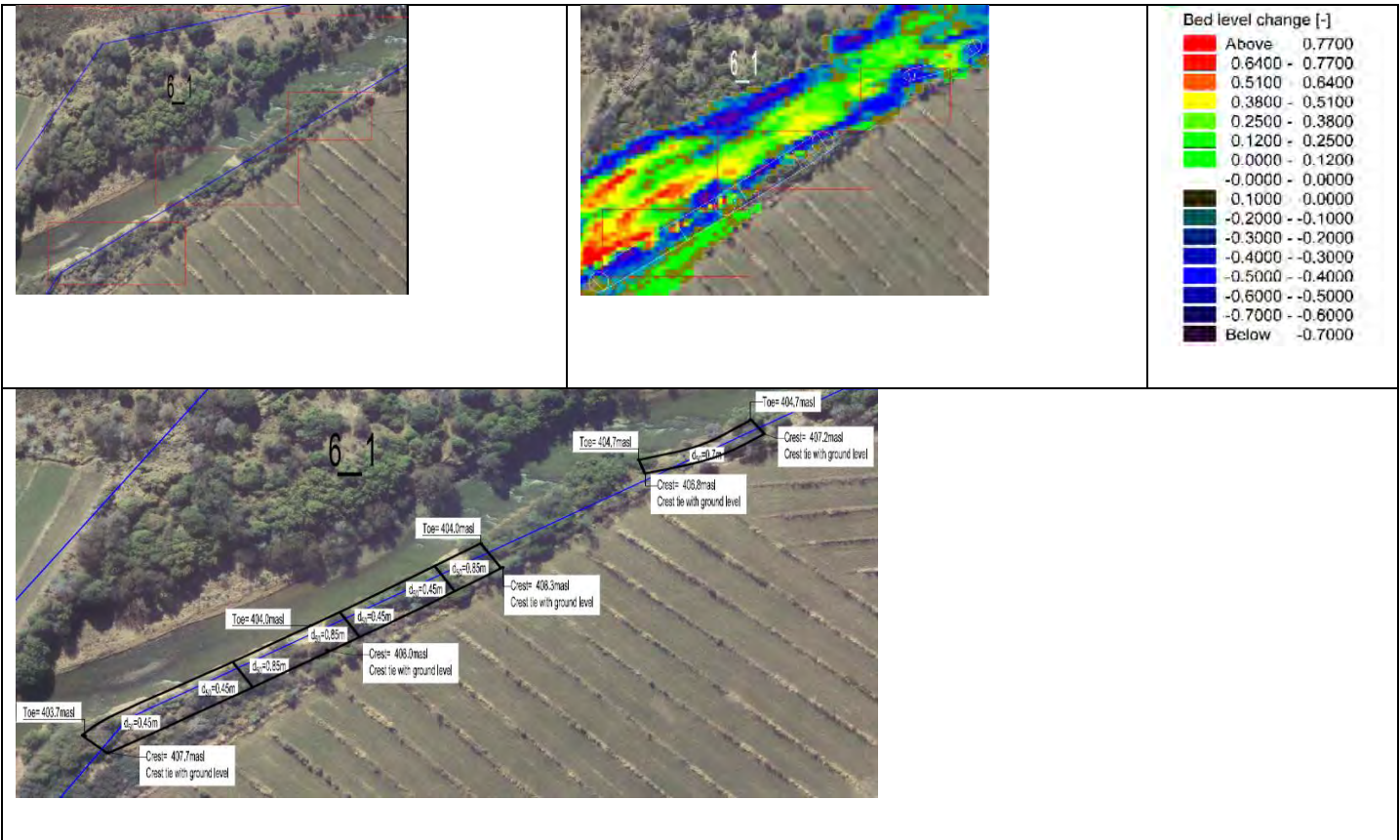


## **Zone 6**

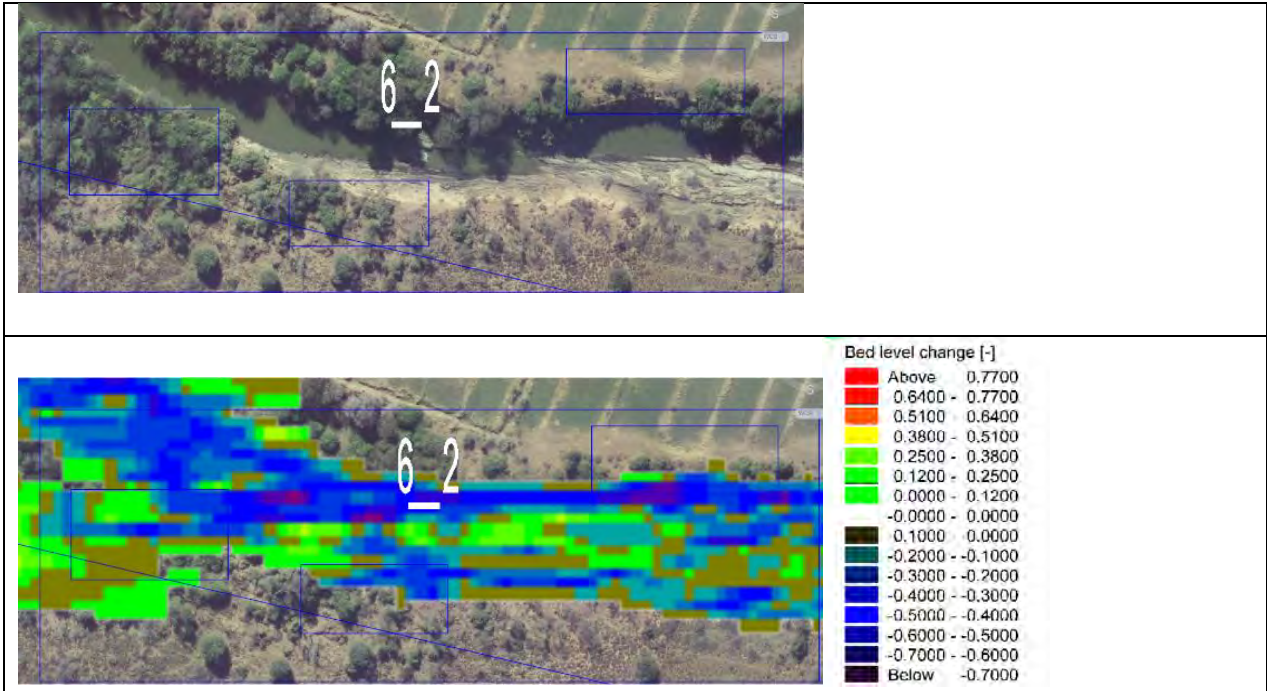




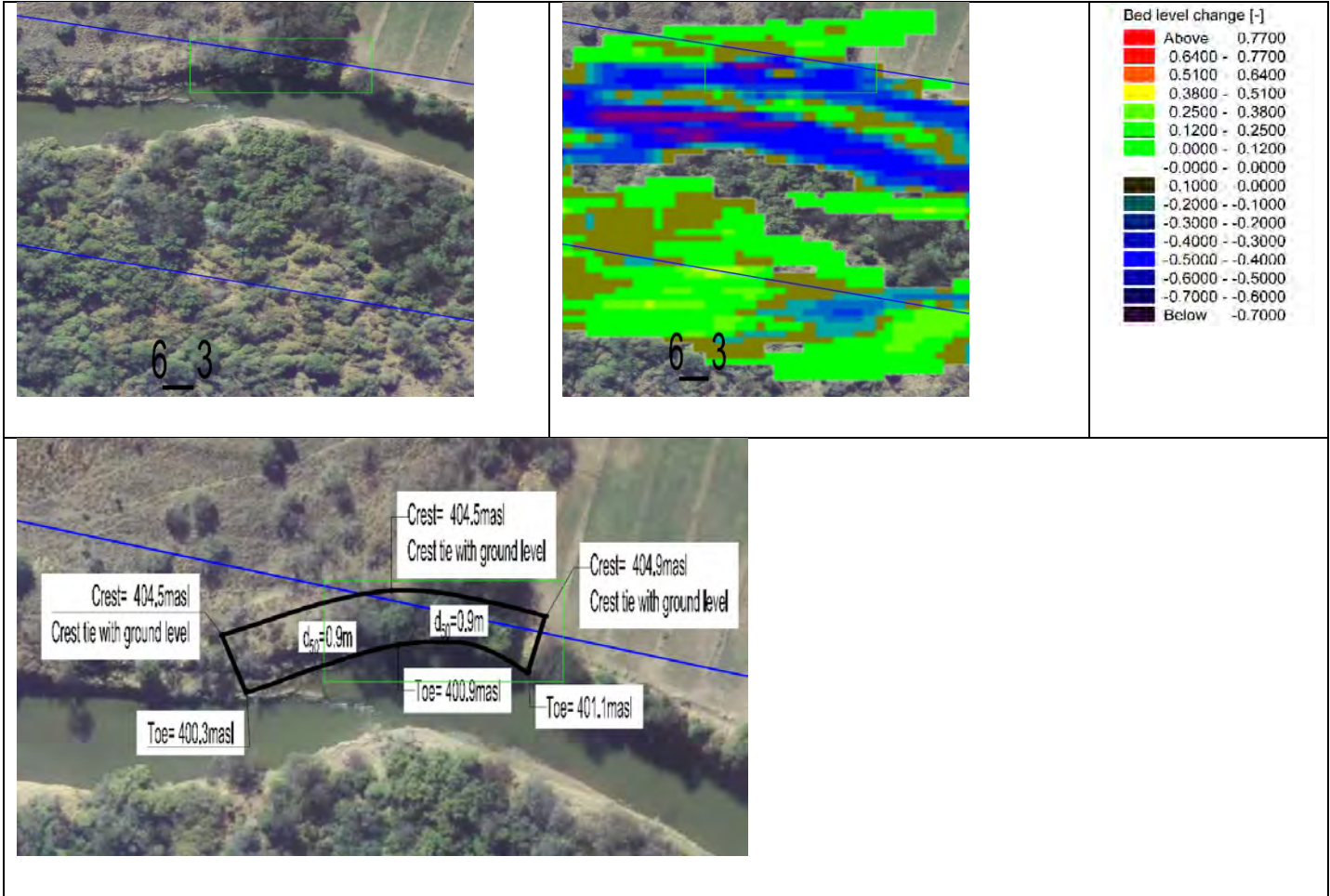
**Zone 6\_1** The zone has banks crossing the servitude and encroaching farmland.



**Zone 6\_2** The zone has banks within the servitude. Upstream tributary flow induces the erosion and protection will constrict the flow thus not necessary.

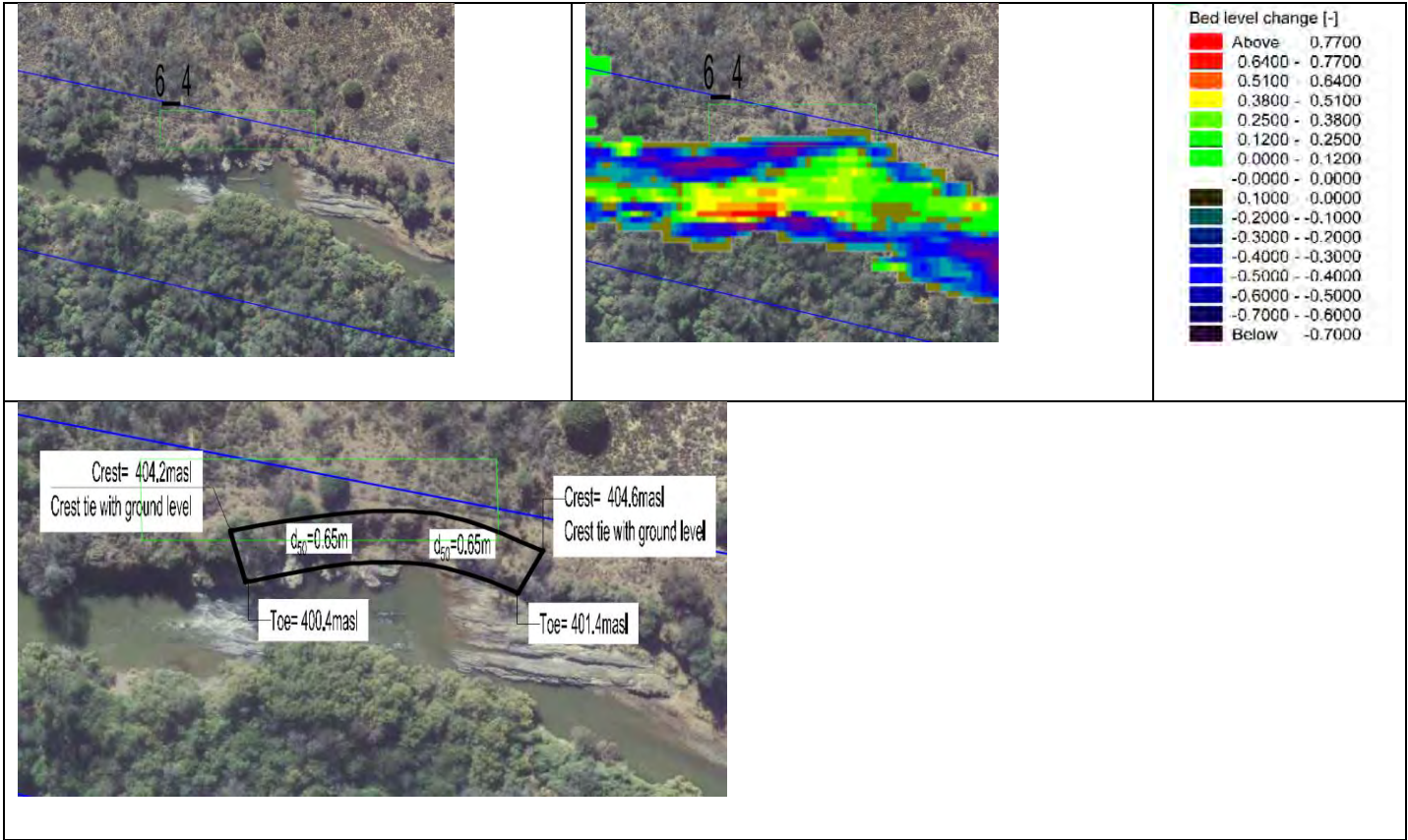


**Zone 6\_3** The zone has banks crossing the servitude and encroaching farmland.

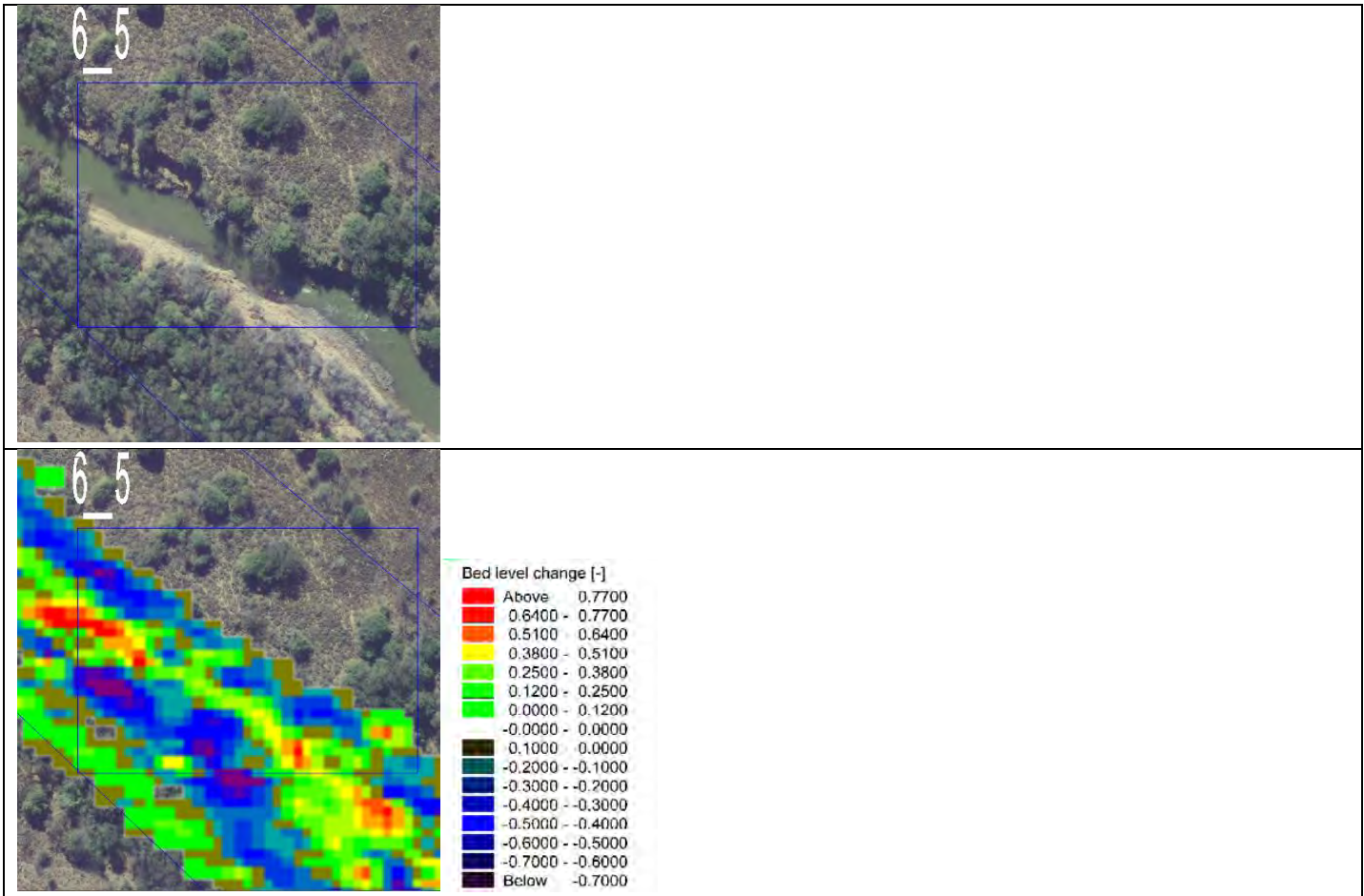




**Zone 6\_4** The zone has banks crossing the servitude but with bedrock outcropping.

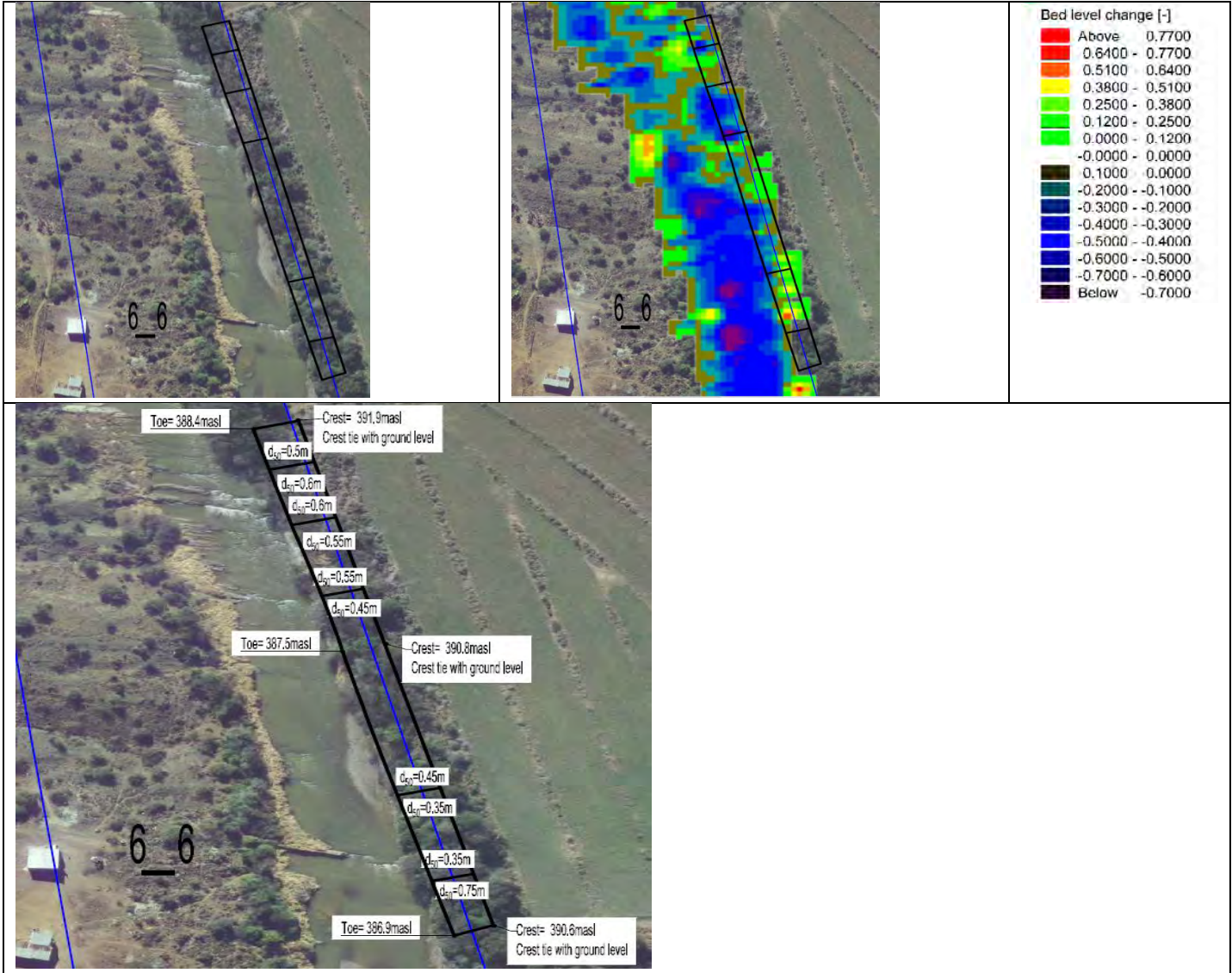


**Zone 6\_5** The zone has unstable banks within the servitude and protection is not necessary.





**Zone 6\_6** The zone has banks crossing the servitude and encroaching farmland

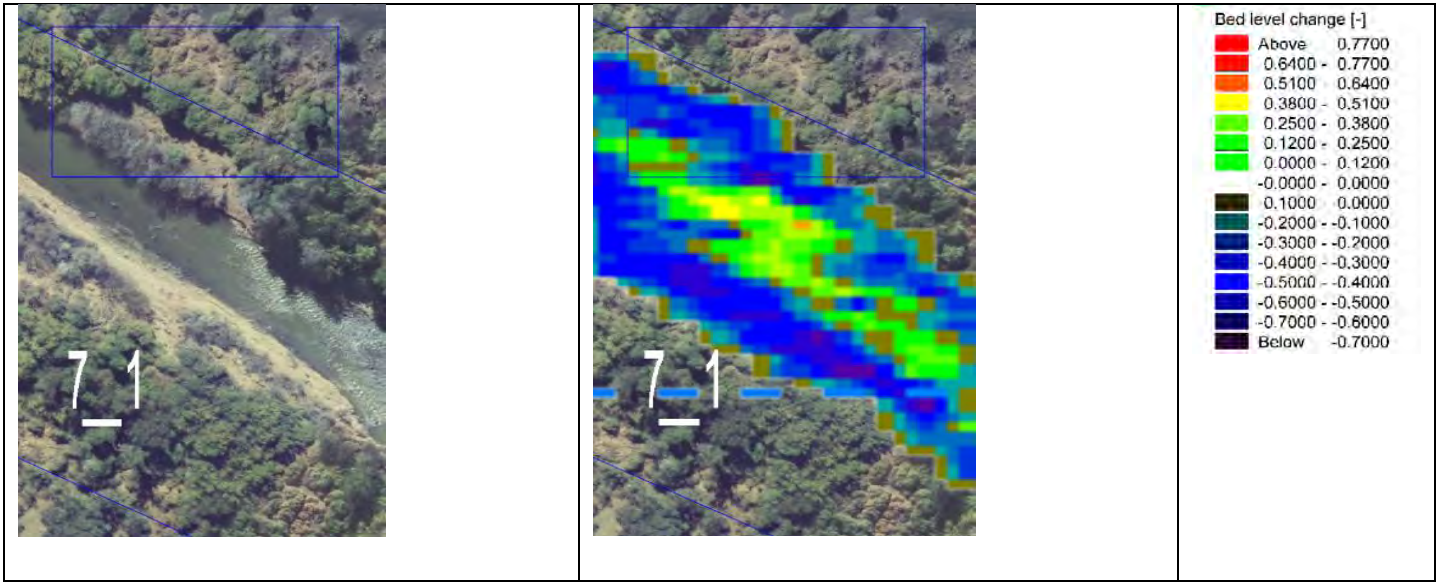


## **Zone 7**

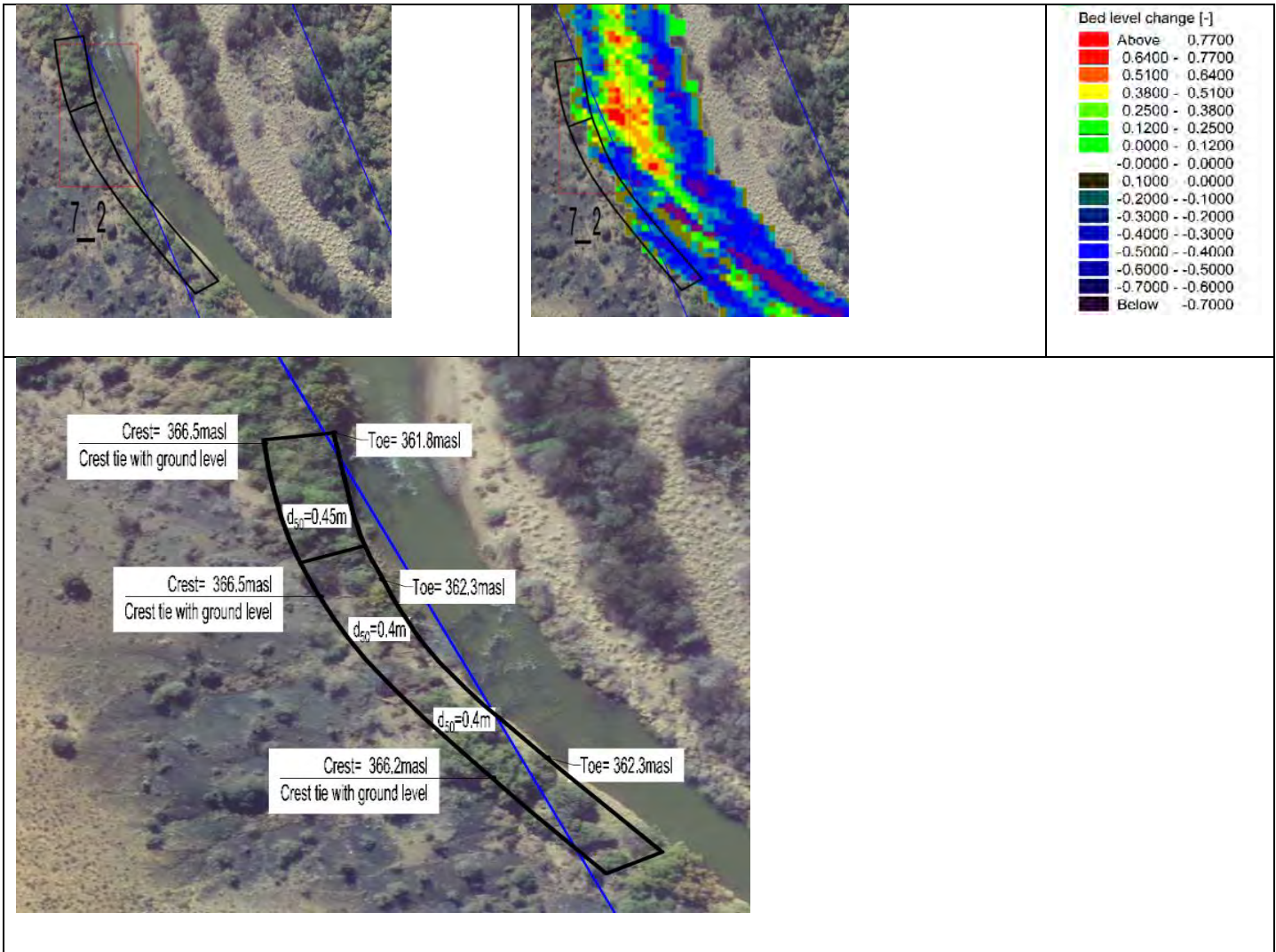




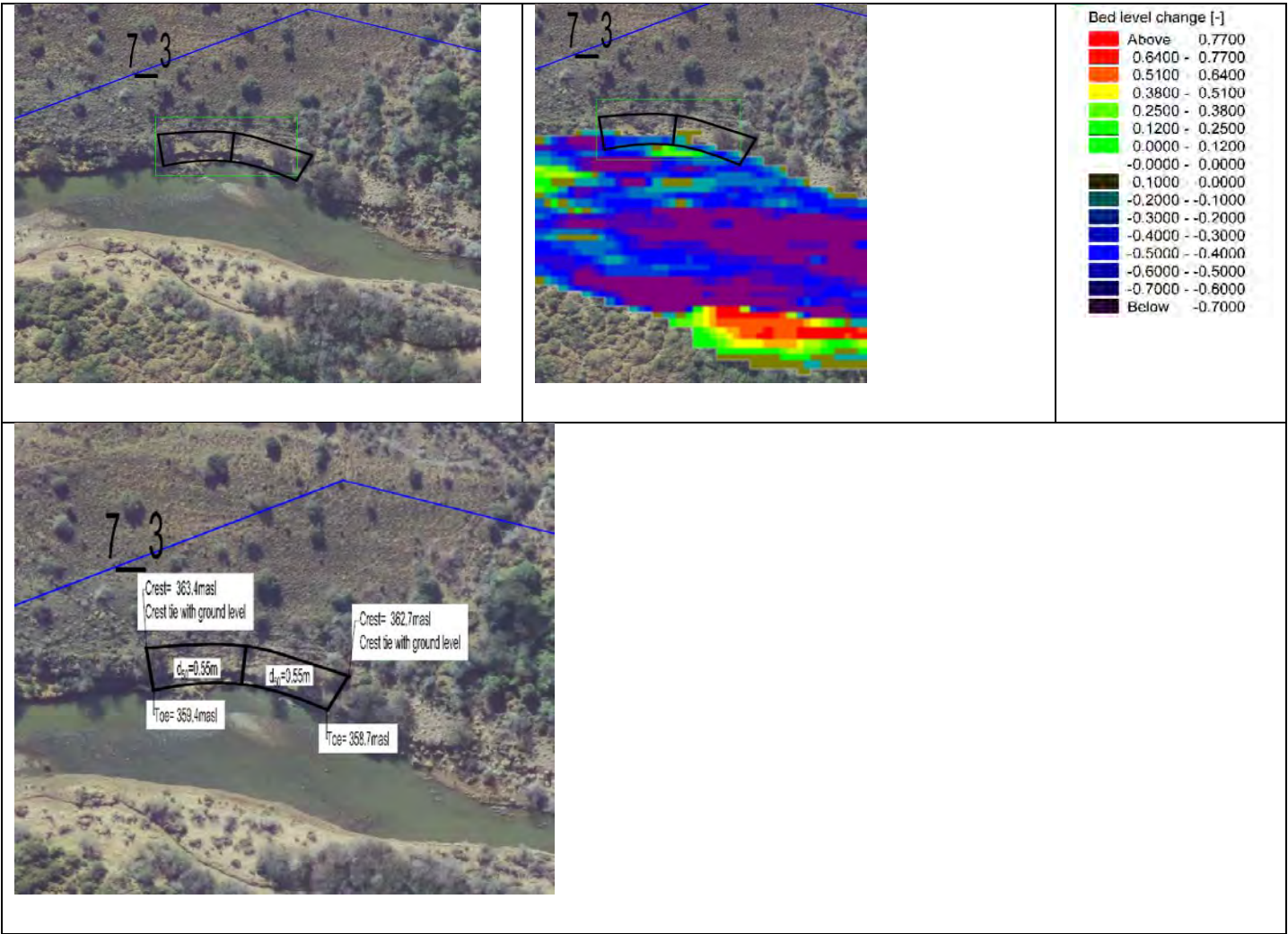
**Zone 7\_1** The zone has unstable banks within the servitude and protection is not necessary



**Zone 7\_2** The zone has banks crossing the servitude

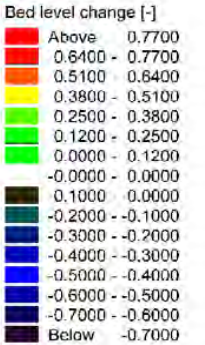
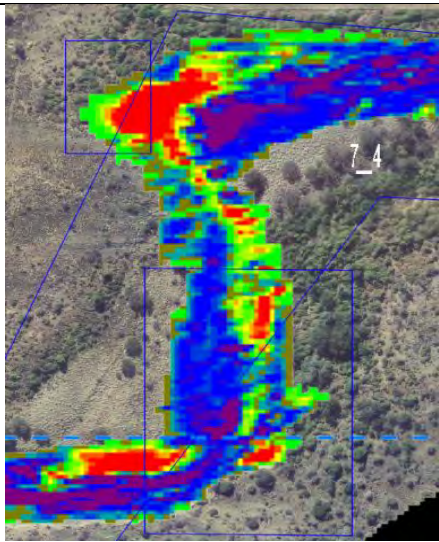
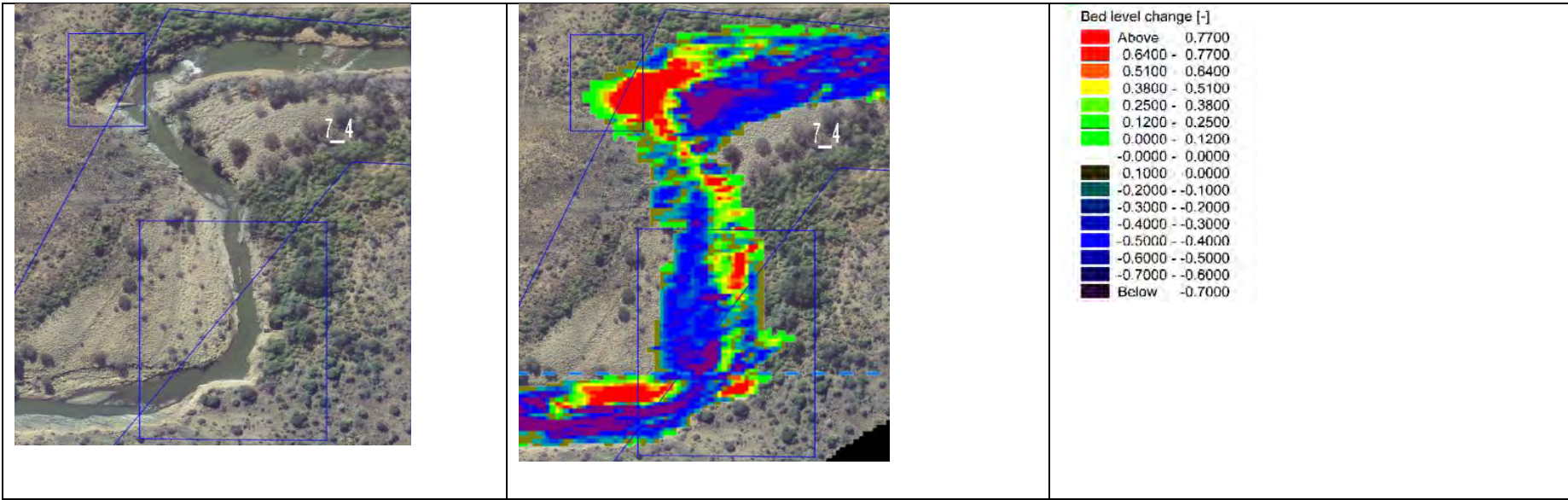


**Zone 7\_3** The zone has unstable banks within the servitude.





**Zone 7\_4** This area's river servitude seems inaccurate.

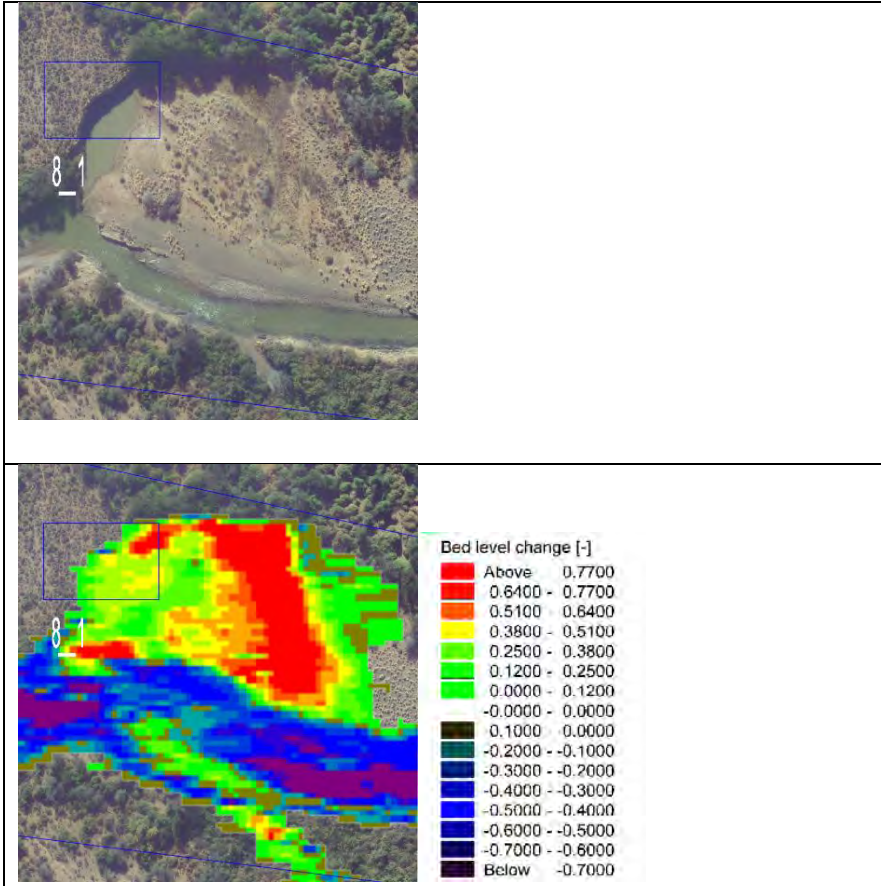




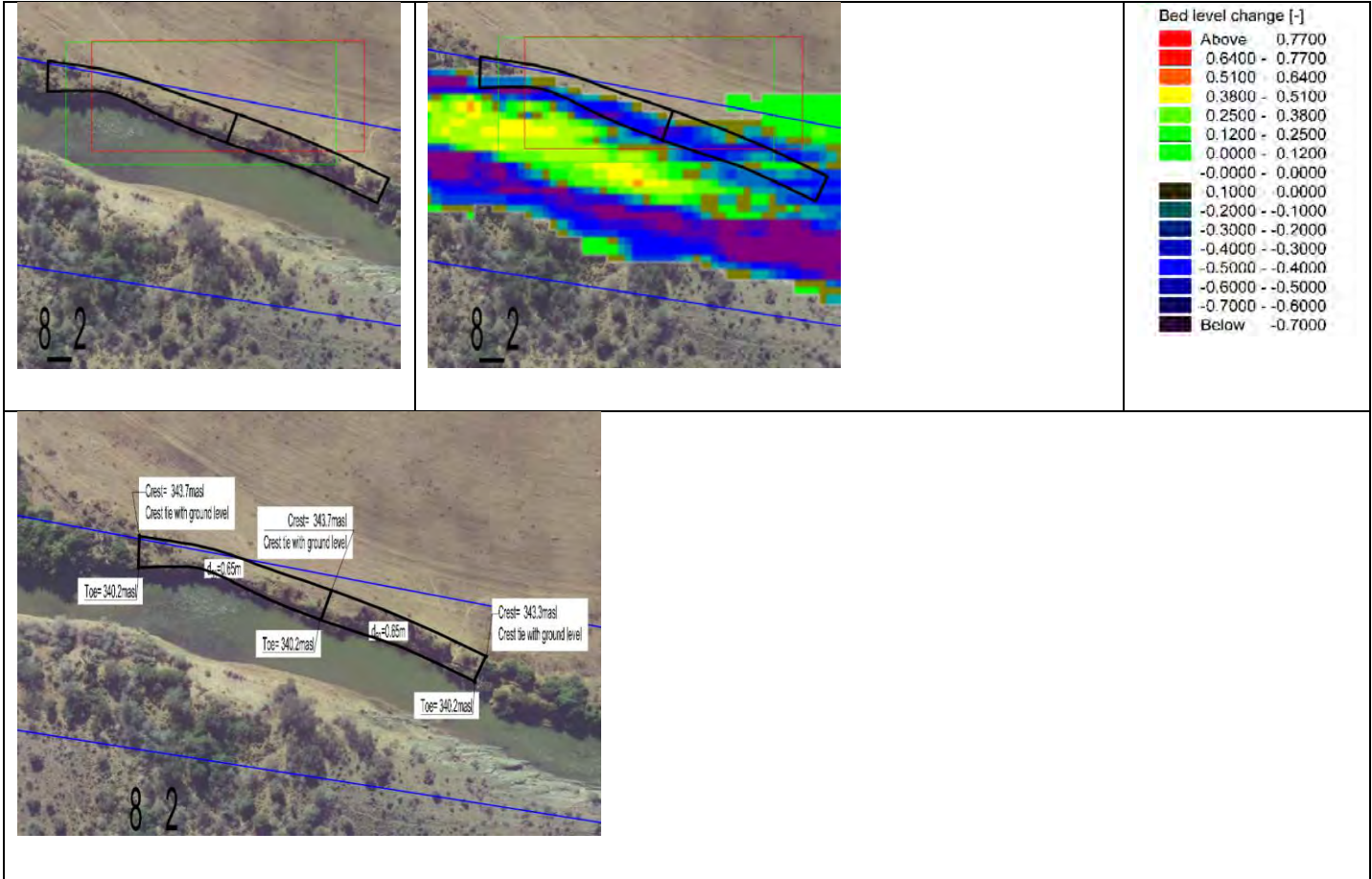
## **Zone 8**



**Zone 8\_1** The zone has unstable banks within the servitude thus protection is not necessary.

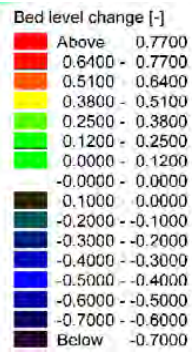
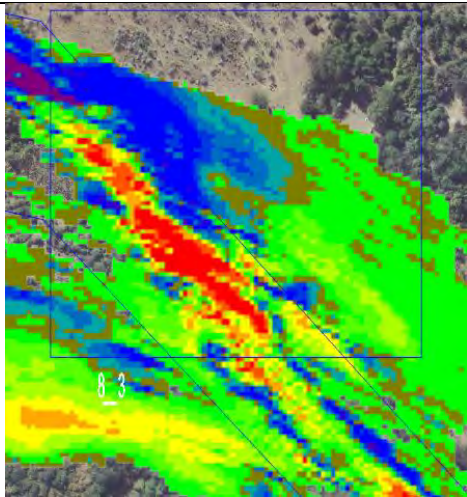


**Zone 8\_2** The zone has unstable banks crossing the servitude and encroaching onto farm land





**Zone 8\_3** Flow in this region is on a wide floodplain and protection will constrict the flow further, thus not necessary.



## **Zone 9**



Legend  
River Rehabilitation Sites



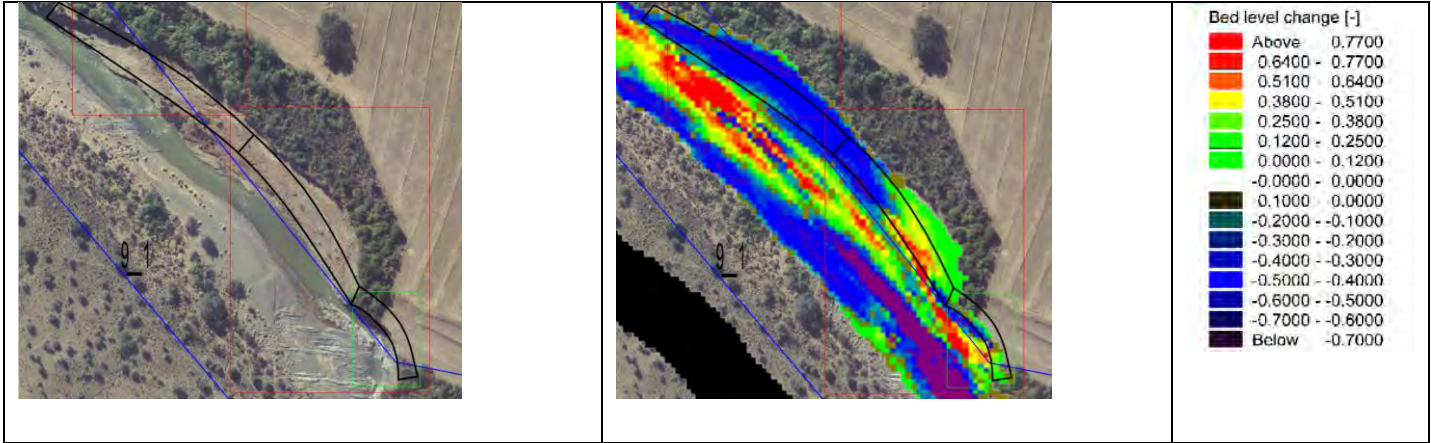
SKOENMAKERS RIVER REHABILITATION ASSESSMENT  
ZONE 9

Date:	08/02/2016	Compiled by:	PAUJ
Project No:	472748	Scale:	1:8,000

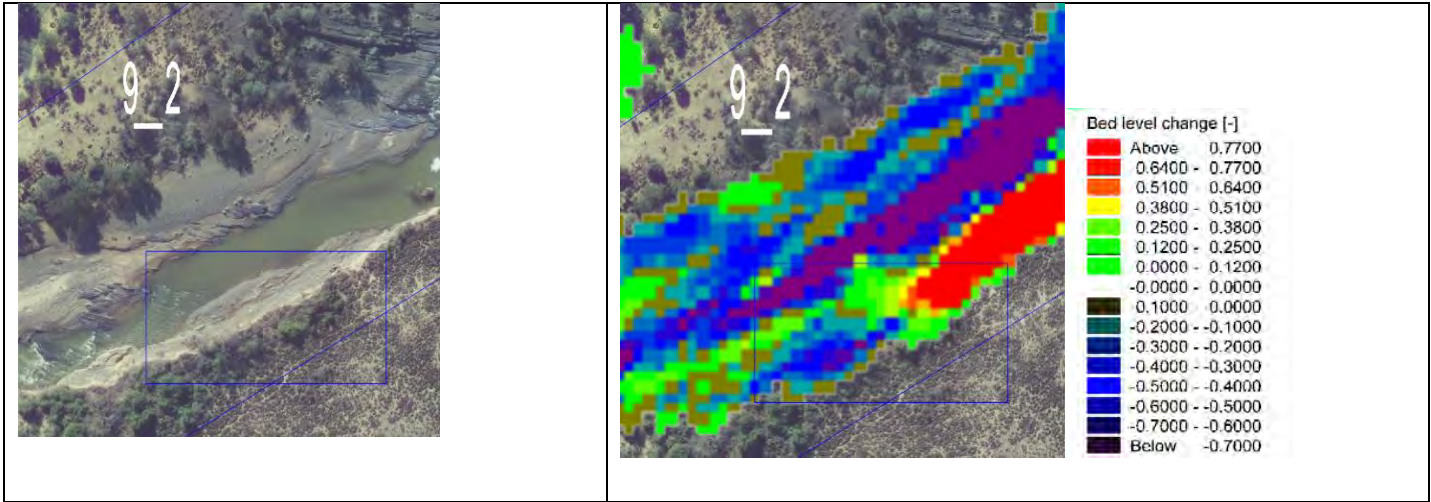
Path: J:\472748\_Skoenmakers Rehab\9 GIS\G1SPROJ\Map for BAR and VIUA\472748\_20150208\_River\_Rehab\_Section\_Layout\_A3.mxd



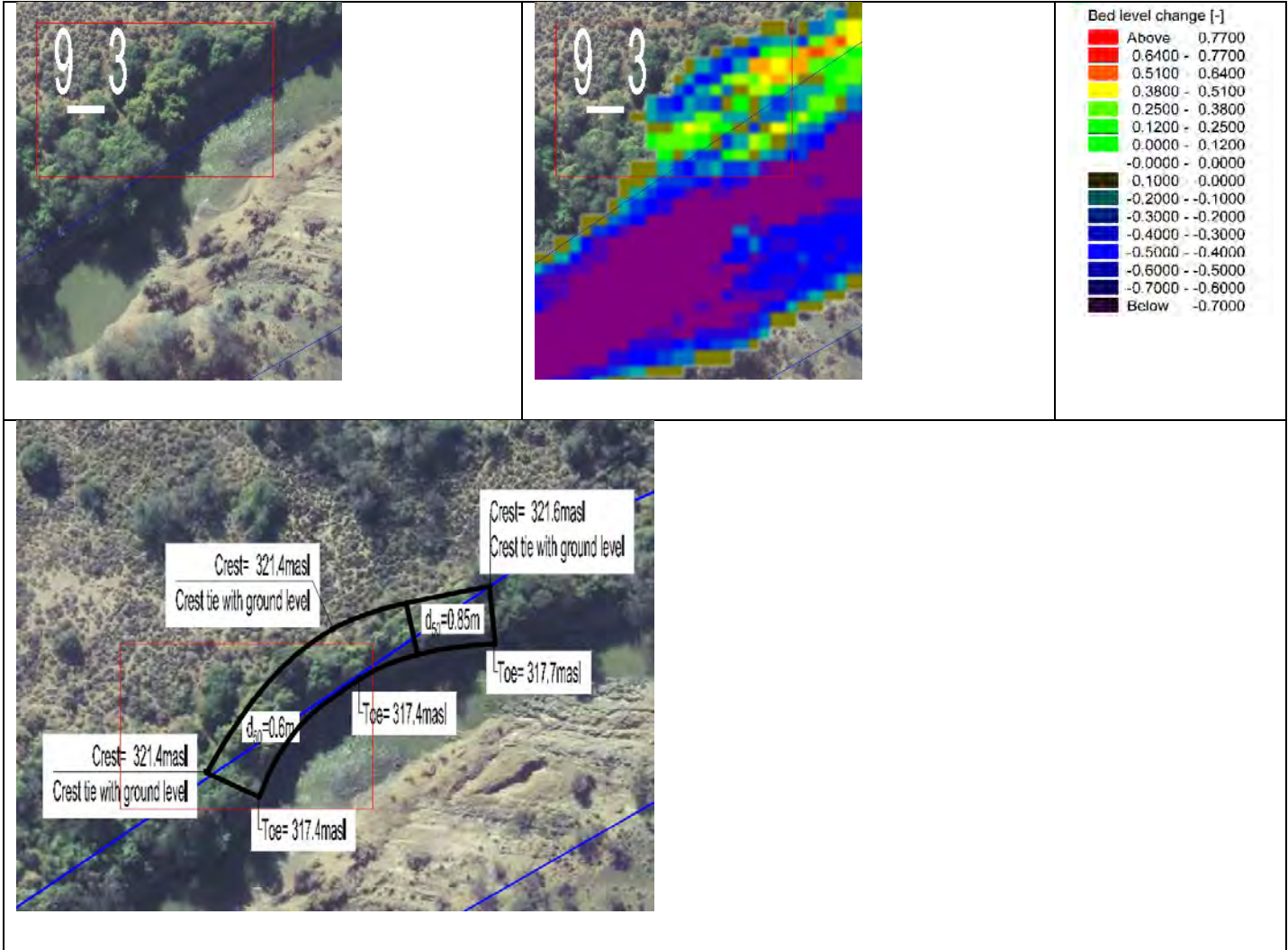
**Zone 9\_1** The zone has unstable banks crossing the servitude and encroaching onto farm land.



**Zone 9\_2** The zone has unstable banks within the servitude thus protection is not necessary.



**Zone 9\_3** The zone has unstable banks crossing the servitude which seemed to be inaccurate

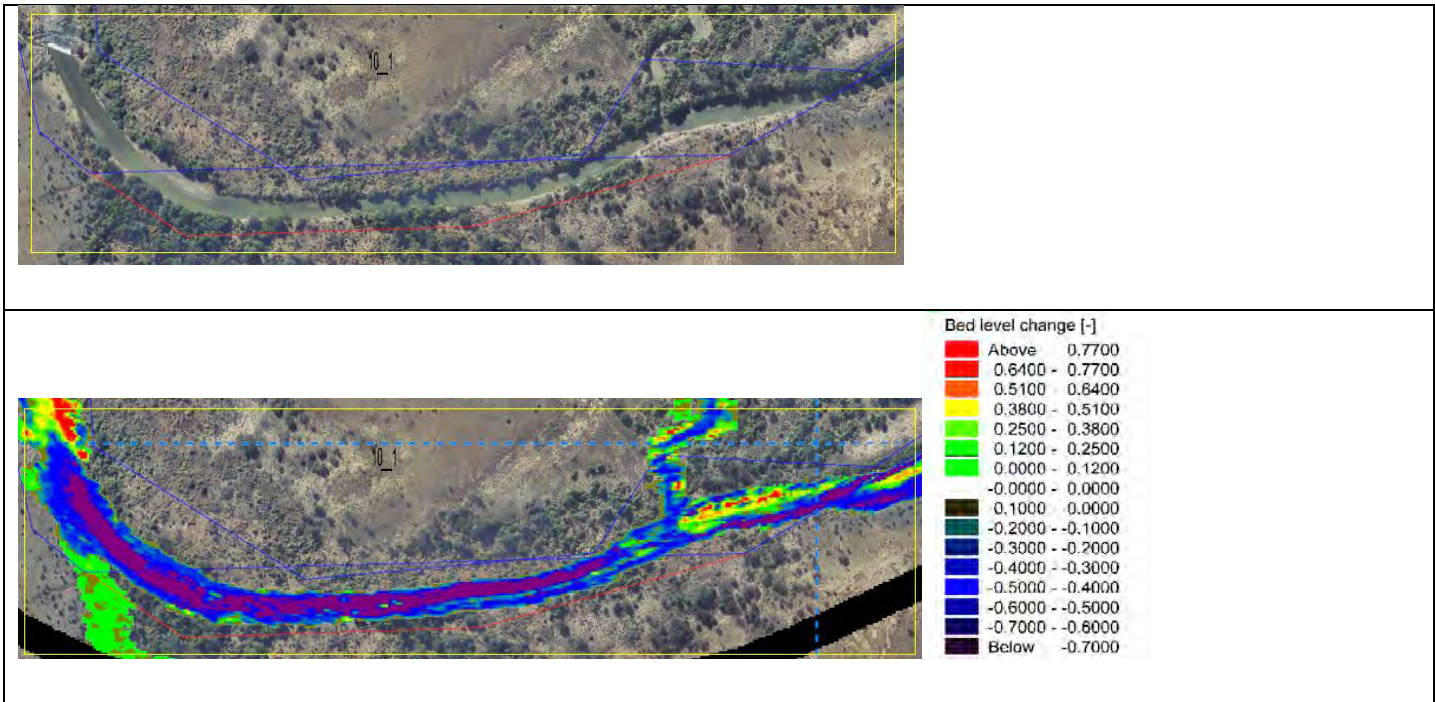


## **Zone 10**



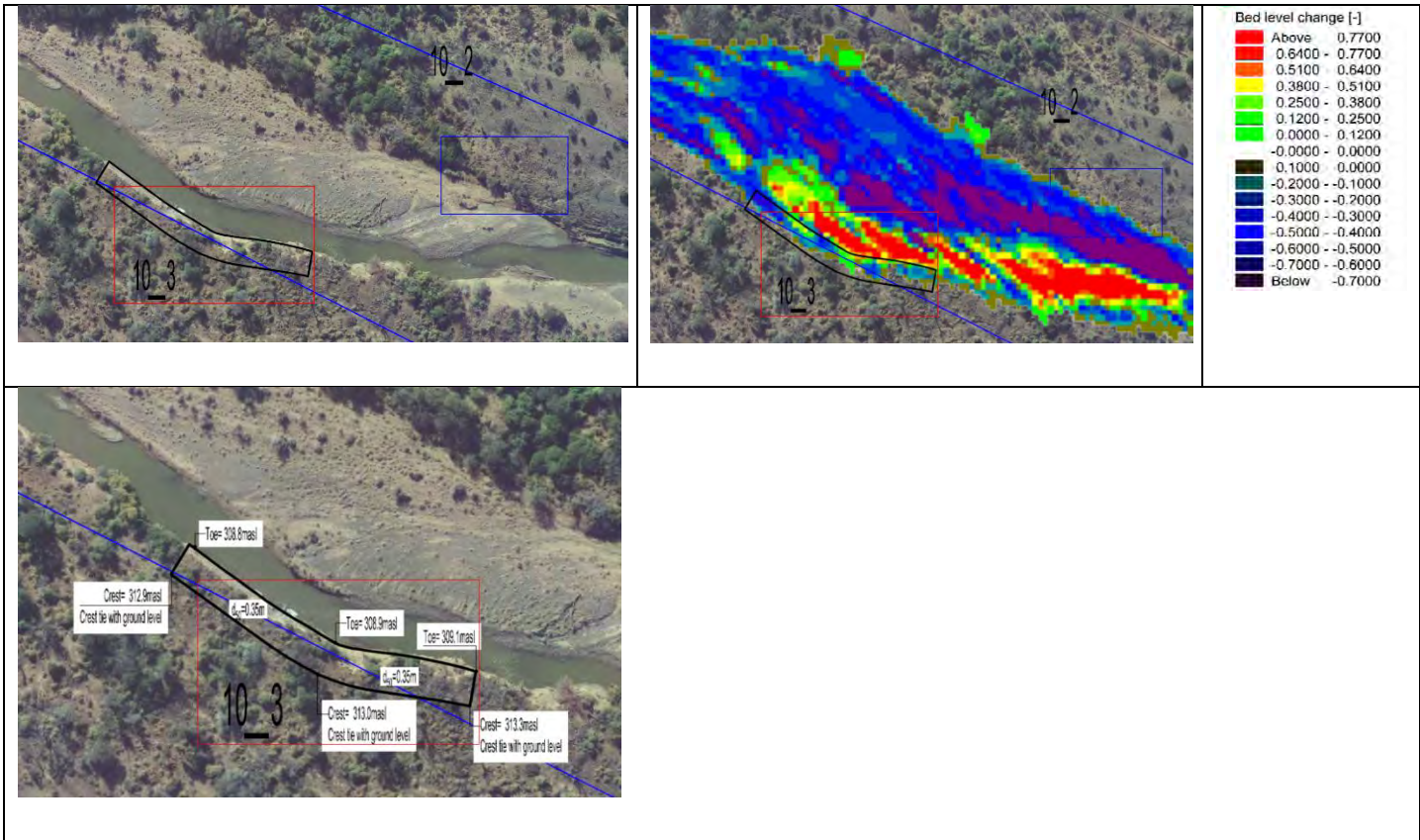


**Zone 10\_1** The area's river servitude seems to be inaccurate



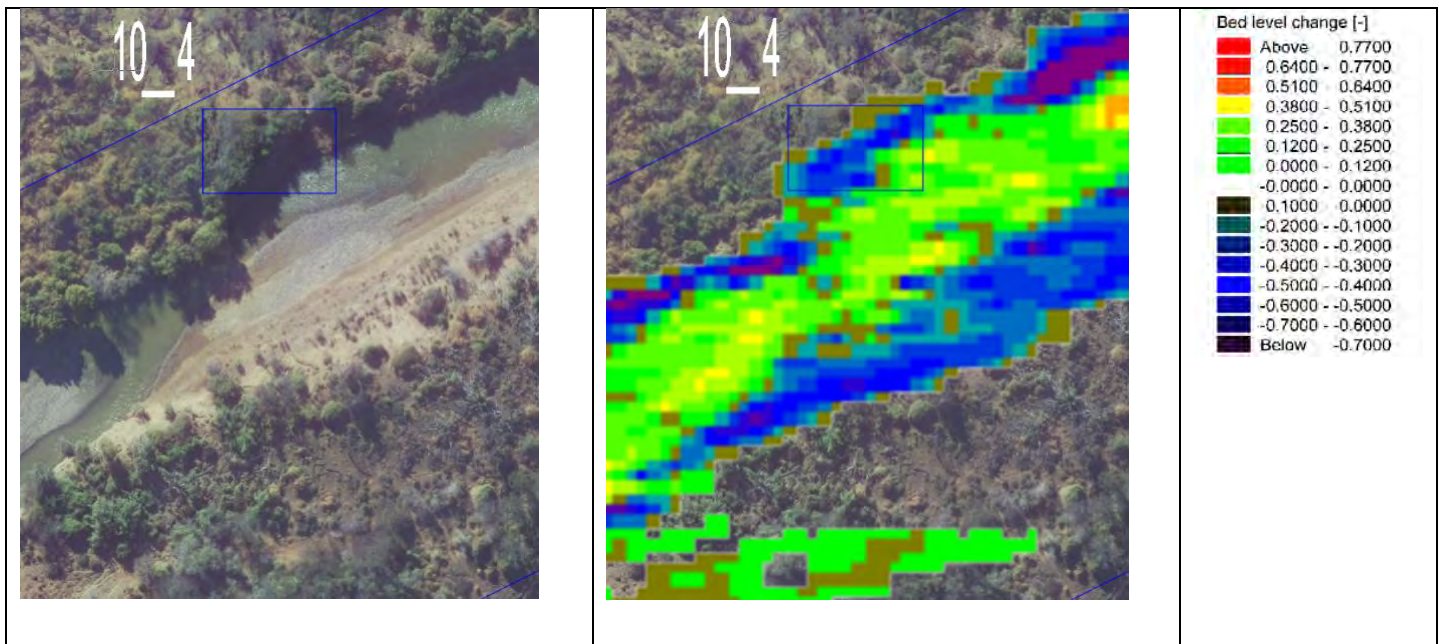
**Zone 10\_2** The zone has unstable banks within the servitude. Protection in this area is not necessary.

**Zone 10\_3** The zone has banks crossing the servitude.



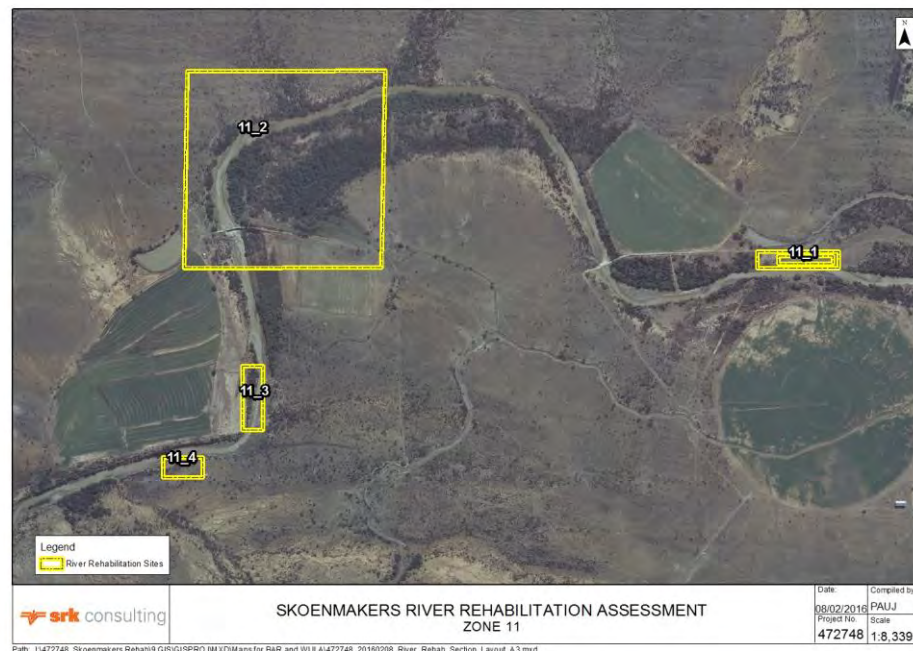


**Zone 10\_4** The zone has banks within the servitude. Upstream tributary flow induces the erosion and protection will constrict the flow thus not necessary.

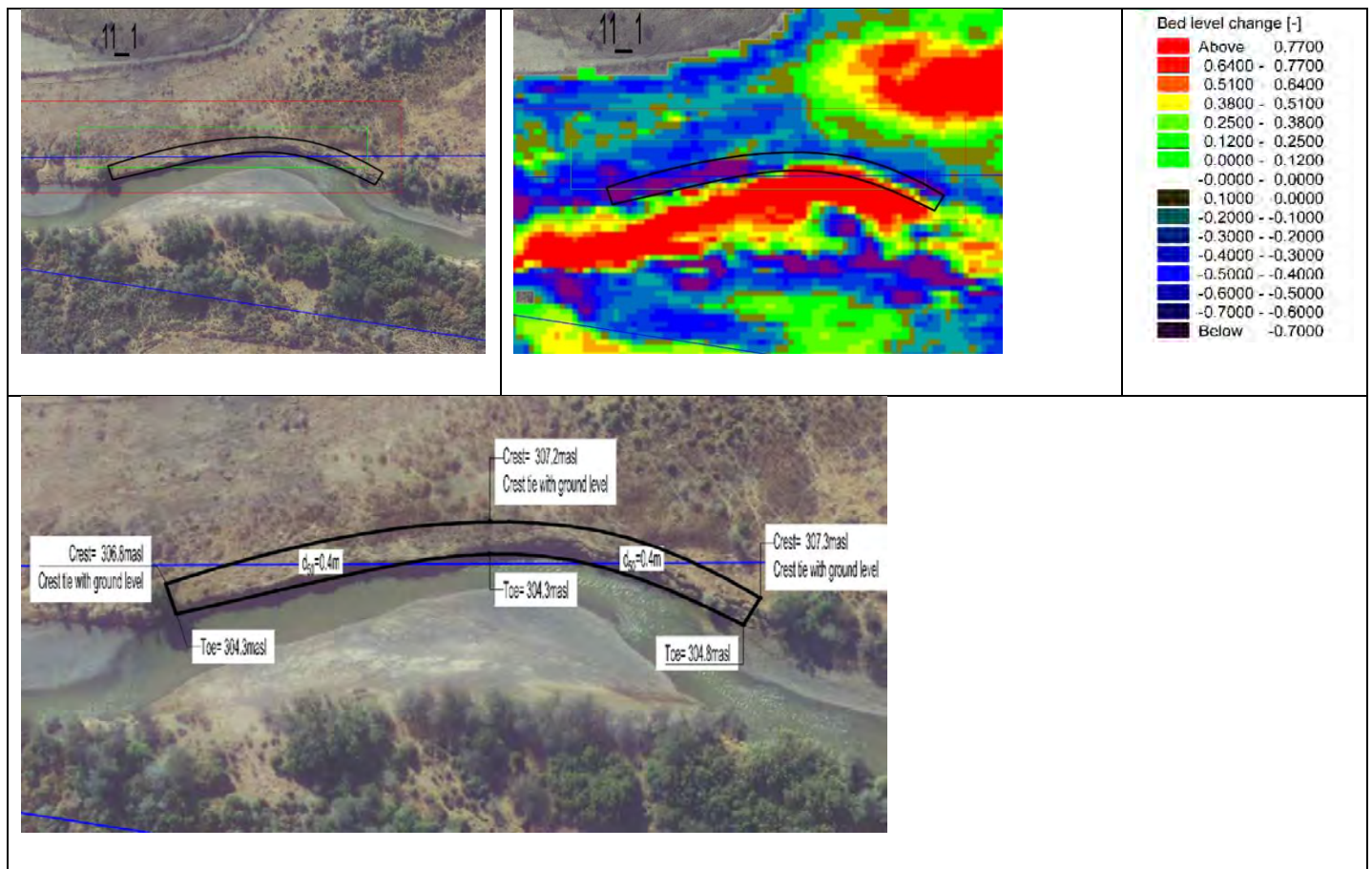




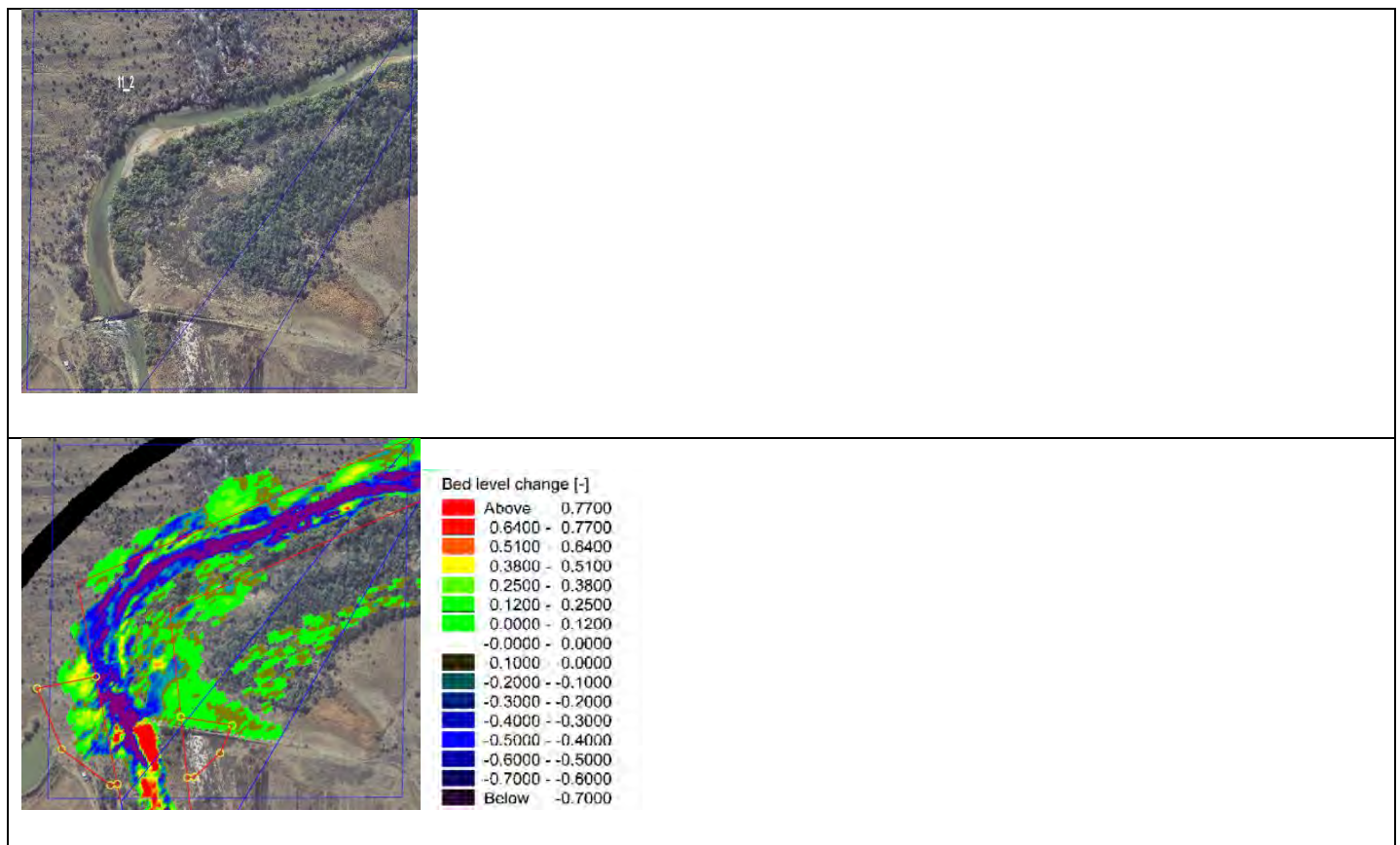
## **Zone 11**



**Zone 11\_1** The zone has unstable banks crossing the servitude and flow is on a wide floodplain.



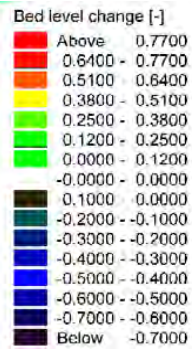
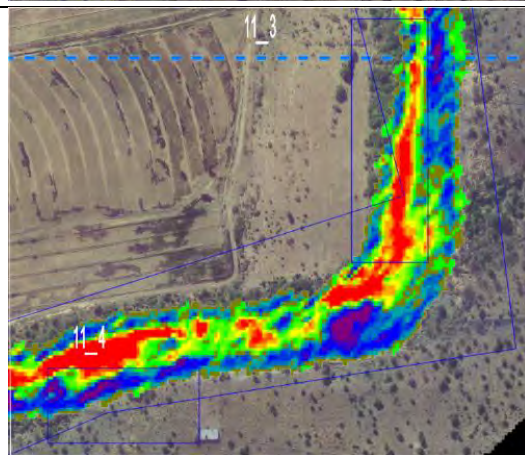
**Zone 11\_2** The area river servitude is inaccurate





**Zone 11\_3** The area's river servitude seems inaccurate.

**Zone 11\_4** The zone has unstable banks within the servitude. Protection in this area is not necessary.



## **Zone 12**





Zone 12\_1 The zone has unstable banks crossing the servitude.

